

ALUMINCO[®]

ALUMINIUM BUILDING SYSTEMS



Crystalline[®]
railing system

Pricelist / Liste de prix

A•line

Glass supporting bases / Base supportant le vitrage

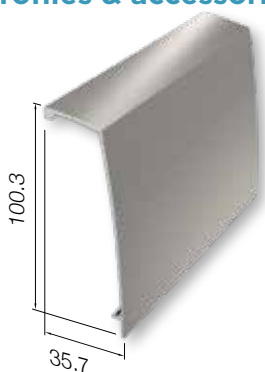


Glass base / Embase de support	
Code	F85-150A
Price/Prix	27,20 €/pc



Glass base / Embase de support	
Code	F85-300A
Price/Prix	37,50 €/pc

Profiles & accessories / Profils & accessoires



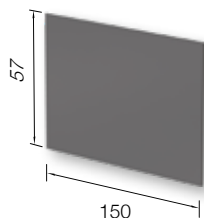
Base cover / Cache frontal	
Code	F85-1K1
Weight/Poids	550gr/m
Length/Longueur	6 m
Price/Prix	7,30 €/Kg



End cap / Embout	
Code	F85-416
Natural Anodizing Anodization naturelle	7,20 €/pc
Anodizing in Inox Finish Anodize en teint d'Inox	7,35 €/pc
WHITE / BLACK	7,30 €/pc

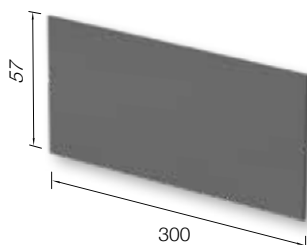


End cap (perforated)/Embout Ouvert	
Code	F85-416L (8.8.4)
Natural Anodizing Anodization naturelle	8,20 €/pc
Anodizing in Inox Finish Anodize en teint d'Inox	8,30 €/pc
WHITE / BLACK	8,20 €/pc



PVC sheet 1.5 mm Plaque en PVC 1.5 mm	
Code	F85-E009
Color/Couleur	Black/Noir
Length/Longueur	150 mm
Price/Prix	1,30 €/pc

Included in the glass support base F85-150A, also available separately
Fournis avec les embasses F85-150A, ainsi qu' a part

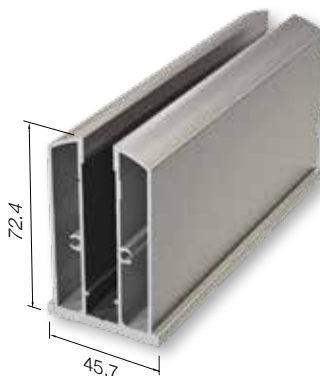


PVC sheet 1.5 mm Plaque en PVC 1.5 mm	
Code	F85-E010
Color/Couleur	Black/Noir
Length/Longueur	300 mm
Price/Prix	2,45 €/pc

Included in the glass support base F85-300A, also available separately
Fournis avec les embasses F85-300A, ainsi qu' a part

A10•line

Glass supporting bases / Base supportant le vitrage



Base profile	
Profil d'embase sur sol (Verre 10 mm)	
Code	F85-904
Weight/Poids	1796gr/m
Length/Longueur	6 m
Price/Prix	7,30 €/Kg

Profiles & accessories / Profils & accessoires



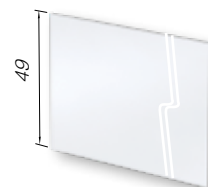
Round handrail Ø50 / Courante Ø50	
Code	F85-202
Weight/Poids	721 gr/m
Length/Longueur	6 m
Price/Prix	7,30 €/Kg



End cap / Embout	
Code	F85-444
Natural Anodizing Anodization naturelle	5,50 €/pc
Anodizing in Inox Finish Anodize en teint d'Inox	5,60 €/pc
WHITE / BLACK	5,55 €/pc



Hole covering cap / Embouts	
Code	4438
Natural Anodizing Anodization naturelle	0,50 €/pc
Anodizing in Inox Finish Anodize en teint d'Inox	0,55 €/pc



PVC sheet 1 mm/Plaque en PVC 1 mm	
Code	F85-411
Mater./Matériel	PVC
Color/Couleur	White
Length/Longueur	2 m
Price/Prix	2,50 €/pc

Gaskets / Joints



Base gasket/Joint pour dormant	
Code	EA420-443M
Mater./Matériel	EPDM
Length/Longueur	150 m
Price/Prix	0,77 €/m



Handrail gasket / Joint de vitrage	
Code	EA410-420M
Mater./Matériel	EPDM
Length/Longueur	350 m
Price/Prix	0,37 €/m

■ Price / Prix (1): **A-001/420 Anodic** | Price / Prix (2): **A-432**

■ Accessories: Colors white RAL and black RAL at no charge. Extra charge 25% and 35% for any other RAL colors and special colors respectively.

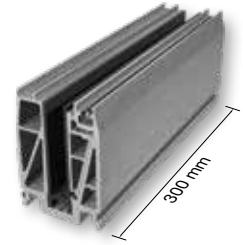
Accessoires: RAL Blanc et RAL noir sans charge supplémentaire. Pour les couleurs RAL restantes ou couleurs spéciales, surcharge 25% & 35% respectivement.

C2·line

Glass supporting bases / Base supportant le vitrage



Glass base / Embase de support	
Code	F85-150C2/16 (8.8.4) F85-150C2/20 (10.10.4)
Price/Prix	28,30 €/pc



Glass base / Embase de support	
Code	F85-300C2/16 (8.8.4) F85-300C2/20 (10.10.4)
Price/Prix	37,10 €/pc

Profiles and accessories / Profils et accessoires



Base cover / Cache frontal	
Code	F85-1K15
Weight/Poids	705 gr/m
Length/Longueur	6 m
Price/Prix	7,30 €/Kg



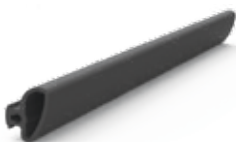
End cap / Embout	
Code	F85-415/C2
Natural Anodizing Anodization naturelle	7,90 €/pc
Anodizing in Inox Finish Anodize en teint d' Inoxy	8,00 €/pc
WHITE / BLACK	7,95 €/pc



End cap (perforated)/Embout Ouvert	
Code	F85-415/C2 L (8.8.4) F85-415/C2 M (10.10.4)
Natural Anodizing Anodization naturelle	8,90 €/pc
Anodizing in Inox Finish Anodize en teint d' Inoxy	9,00 €/pc
WHITE / BLACK	8,85 €/pc



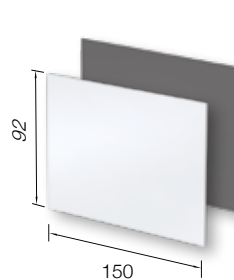
Alignment profile / Plat profil	
Code	PAT39-120
Weight/Poids	121 gr/m
Length/Longueur	6 m



Gasket for base cover Joint de support F85-1K15	
Code	F85-422 (8.8.4) F85-426 (10.10.4)
Mater./Matériel	EPDM
Price/Prix	F85-422 0,65 €/m F85-426 0,52 €/m

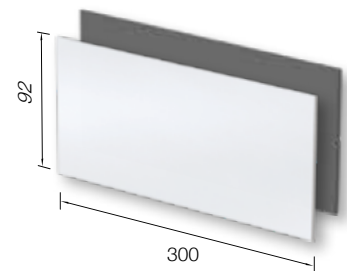


Glass support spacer Embout de profil ecastre	
Code	F85-436
Mater./Matériel	PVC
Price/Prix	3,30 €/m



PVC sheet / Plaque en PVC	
Code	F85-E020 • (1 mm) F85-E022 • (3 mm)
Color/Couleur	White/Blanc Black/Noir
Length/Longueur	150 mm
Price/Prix	0,90 €/pc

Included in the glass support base F85-150C2, also available separately
Fournis avec les embasses F85-150C2, ainsi qu' a part



PVC sheet / Plaque en PVC	
Code	F85-E021 • (1 mm) F85-E023 • (3 mm)
Color/Couleur	White/Blanc Black/Noir
Length/Longueur	300 mm
Price/Prix	2,25 €/pc

Included in the glass support base F85-300C2, also available separately
Fournis avec les embasses F85-300C2, ainsi qu' a part

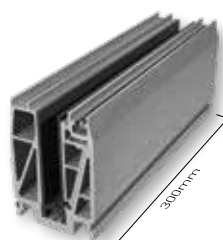
■ Price / Prix (1): A-001/420 Anodic | Price / Prix (2): A-432

■ Accessories: Colors white RAL and black RAL at no charge. Extra charge 25% and 35% for any other RAL colors and special colors respectively.

Accessoires: RAL Blanc et RAL noir sans charge supplémentaire. Pour les couleurs RAL restantes ou couleurs spéciales, surcharge 25% & 35% respectivement.

C2u·line

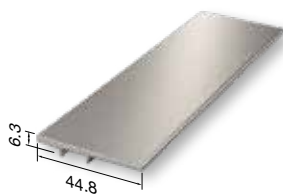
Glass supporting bases / Base supportant le vitrage



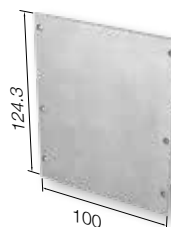
Glass base / Embase de support	
	F85-150C2/16 (8.8.4)
Code	F85-150C2/20 (10.10.4)
Price/Prix	28,30 €/pc

Glass base / Embase de support	
	F85-300C2/16 (8.8.4)
Code	F85-300C2/20 (10.10.4)
Price/Prix	37,10 €/pc

Profiles and accessories / Profils et accessoires



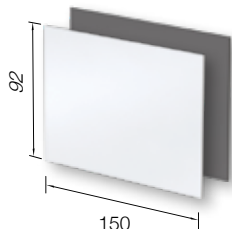
Base cover / Cache frontal	
Code	F85-1K5
Weight/Poids	295 gr/m
Length/Longueur	6 m
Price/Prix	7,30 €/Kg



In-floor base guide cap Embout de guidage encastré	
Code	F85-425
Price/Prix	4,10 €/pc

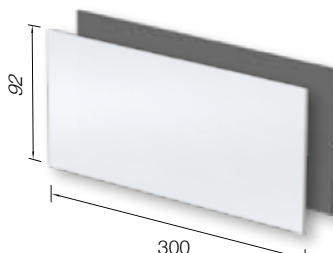


Glass support spacer Embout de profil encastré	
Code	F85-436
Mater./Matériel	PVC
Price/Prix	3,30 €/m



PVC sheet / Plaque en PVC	
Code	F85-E020 • (1 mm) F85-E022 • (3 mm)
Color/Couleur	White/Blanc Black/Noir
Length/Longueur	150 mm
Price/Prix	0,90 €/pc

Included in the glass support base F85-150C2, also available separately
Fournis avec les embasses F85-150C2, ainsi qu' à part



PVC sheet / Plaque en PVC	
Code	F85-E021 • (1 mm) F85-E023 • (3 mm)
Color/Couleur	White/Blanc Black/Noir
Length/Longueur	300 mm
Price/Prix	2,25 €/pc

Included in the glass support base F85-300C2, also available separately
Fournis avec les embasses F85-300C2, ainsi qu' à part



Gasket for base cover F85-1K5/Joint	
Code	US530-3PRM (10.10.4)
Ref.	US530-4PRM (8.8.4)
Price/Prix	4,70 €/Kg

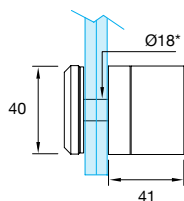
■ Price / Prix (1): **A-001/420 Anodic** | Price / Prix (2): **A-432**

■ Accessories: Colors white RAL and black RAL at no charge. Extra charge 25% and 35% for any other RAL colors and special colors respectively.

Accessoires: RAL Blanc et RAL noir sans charge supplémentaire. Pour les couleurs RAL restantes ou couleurs spéciales, surcharge 25% & 35% respectivement.

Ds•line

Accessories / Accessoires

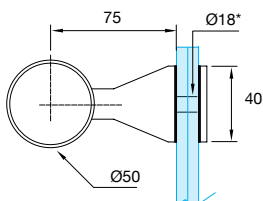


*Glass hole
Trou de verre



Glass support Fixation murale de verre	
Code	4149-200 (8.8.4)
Mater./Matériel	Inox 304
Pack./Condit.	12 pcs (box) 4 pcs (blister)
Price/Prix	35,10 €/pc

Glass support Fixation murale de verre	
Code	4149-201 (10.10.4)
Mater./Matériel	Inox 316
Pack./Condit.	12 pcs (box) 4 pcs (blister)
Price/Prix	46,20 €/pc

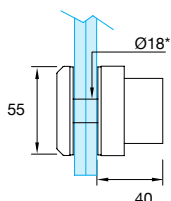


*Glass hole
Trou de verre



Handrail support F50-200 Fixation articulée sur verre	
Code	4148-200 (8.8.4)
Mater./Matériel	Inox 304
Pack./Condit.	12 pcs (box) 4 pcs (blister)
Price/Prix	48,00 €/pc

Handrail support F50-200 Fixation articulée sur verre	
Code	4148-201 (10.10.4)
Mater./Matériel	Inox 316
Pack./Condit.	12 pcs (box) 4 pcs (blister)
Price/Prix	48,50 €/pc



*Glass hole
Trou de verre

Glass support Fixation Murale Verre Ø55	
Code	4136-200 (8.8.4) (10.10.4)
Mater./Matériel	Inox 316
Pack./Condit.	12 pcs (box) 4 pcs (blister)
Price/Prix	48,00 €/pc

■ Price / Prix (1): **A-001/420 Anodic** | Price / Prix (2): **A-432**

■ Accessories: Colors white RAL and black RAL at no charge. Extra charge 25% and 35% for any other RAL colors and special colors respectively.

Accessoires: RAL Blanc et RAL noir sans charge supplémentaire. Pour les couleurs RAL restantes ou couleurs spéciales, surcharge 25% & 35% respectivement.

TOP MOUNT ≥ 3 KN/m



TOP MOUNT with FIN ≥ 3 KN/m



TOP MOUNT ≥ 3 KN/m



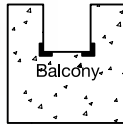
Base U-Profile / Embase

Code	F85-1B63T (10.10.4) (8.8.4)
Weight/Poids	7627 gr/m
Length/Longueur	3 m
Price/Prix	7,30 €/Kg
Profile with Milling/Fraisage 9,30 €/Kg	



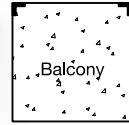
Internal corner / Coude interieur

Code	F85-551*
Length/Longueur	20x20 cm
Natural Anodizing Anodization naturelle	69,20 €/pc



External corner / Coude exterieur

Code	F85-552*
Length/Longueur	20x20 cm
Natural Anodizing Anodization naturelle	69,20 €/pc

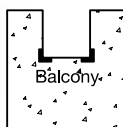


Includes the adhesive tape Lohman DuploColl 373

Include the fixing bolts/anchors

TOP MOUNT with FIN ≥ 3 KN/m


Base U-Profile / Embase	
Code	F85-1B62 (10.10.4) (8.8.4)
Weight/Poids	9666 gr/m
Length/Longueur	3 m
Price/Prix	7,30 €/Kg
Profile with Milling/Fraisage 9,30 €/Kg	



Internal corner / Coude interieur	
Code	F85-468*
Length/Longueur	30x30 cm
Natural Anodizing Anodization naturelle	103,05 €/pc



External corner / Coude exterieur	
Code	F85-480*
Length/Longueur	30x30 cm
Natural Anodizing Anodization naturelle	103,05 €/pc

Accessories / Accessoires


End cap / Embout	
Code	F85-489**
Length/Longueur	130x150 mm
Natural Anodizing Anodization naturelle	11,15 €/pc



End cap / Embout	
Code	F85-488**
Length/Longueur	77x130 mm
Natural Anodizing Anodization naturelle	6,70 €/pc



Concrete Screw Ø12-110 Vis Ø12-110	
Code	EBM12-110
Price/Prix	2,13 €/pc



Pin / Broche	
Code	F85-481
Mater./Matériel	Inox 304
Price/Prix	1,45 €/pc

■ Price / Prix (1): **A-001/420 Anodic** | Price / Prix (2): **A-432**

■ Accessories: Colors white RAL and black RAL at no charge. Extra charge 25% and 35% for any other RAL colors and special colors respectively.

Accessoires: RAL Blanc et RAL noir sans charge supplémentaire. Pour les couleurs RAL restantes ou couleurs spéciales, surcharge 25% & 35% respectivement.

L·line SIDE MOUNT

SIDE MOUNT ≥1 KN/m



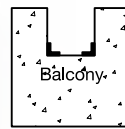
SIDE MOUNT ≥1.7 KN/m



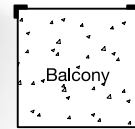
SIDE MOUNT ≥1.7 KN/m



Base U-Profile / Embase	
Code	F85-1B63S (10.10.4) (8.8.4)
Weight/Poids	7627 gr/m
Length/Longueur	3 m
Price/Prix	7,30 €/Kg
Profile with Milling/Fraisage 9,30 €/Kg	



Internal corner / Coude interieur	
Code	F85-553*
Length/Longueur	30x30 cm
Natural Anodizing Anodization naturelle	85,85 €/pc



External corner / Coude exterieur	
Code	F85-554*
Length/Longueur	30x30 cm
Natural Anodizing Anodization naturelle	85,85 €/pc

Includes the adhesive tape Lohman DuploColl 373

Include the fixing bolts/anchors

■ Price / Prix (1): **A-001/420 Anodic** | Price / Prix (2): **A-432**
 ■ Accessories: Colors white RAL and black RAL at no charge. Extra charge 25% and 35% for any other RAL colors and special colors respectively.
 Accessoires: RAL Blanc et RAL noir sans charge supplémentaire. Pour les couleurs RAL restantes ou couleurs spéciales, surcharge 25% & 35% respectivement.

SIDE MOUNT with FIN ≥ 3 KN/m


End cap / Embout	
Code	F85-488
Length/Longueur	77x130 mm
Natural Anodizing Anodization naturelle	6,60 €/pc



Pin / Broche	
Code	F85-481
Mater./Matériel	Inox 304
Price/Prix	1,60 €/pc



Outside slot cap/Embout Exterieur Ø26	
Code	F85-475
Mater./Matériel	PVC
Price/Prix	0,50 €/pc



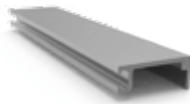
ALLEN TORX CONCRETE SCREW 10X120 ANCRAGE POUR BÉTON 10X120	
Code.	EBM-10120G/2
Price/Prix	1,42 €/pc

L·line

Profiles / Profils



Base inside cover Cache frontal intérieur	
Code	F85-1K61 (10.10.4) (10.10.2)
Weight/Poids	178 gr/m
Length/Longueur	6 m
Price/Prix	7,30 €/Kg
Profile with Milling/Fraisage 9,30 €/Kg	



Base inside cover Cache frontal intérieur	
Code	F85-1K62 (8.8.4) (8.8.2)
Weight/Poids	194 gr/m
Length/Longueur	6 m
Price/Prix	7,30 €/Kg



Base inside cover Cache frontal intérieur	
Code	F85-1K66 (8.8.2) (8.8.4)
Weight/Poids	447 gr/m
Length/Longueur	6 m
Price/Prix	7,30 €/Kg



Base inside cover Cache frontal intérieur	
Code	F85-1K67 (10.10.2) (10.10.4)
Weight/Poids	425 gr/m
Length/Longueur	6 m
Price/Prix	7,30 €/Kg



Base external cover for 15 mm panel Cache frontal extérieur	
Code	F85-1K63
Weight/Poids	475 gr/m
Length/Longueur	6 m
Price/Prix	7,30 €/Kg



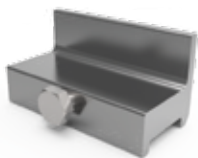
Base external cover for 15 mm panel Cache frontal extérieur	
Code	F85-1K64
Weight/Poids	460 gr/m
Length/Longueur	6 m
Price/Prix	7,30 €/Kg



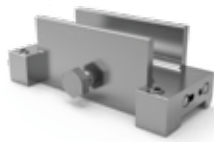
Base external cover for 15 mm panel Cache frontal extérieur	
Code	F85-1K65
Weight/Poids	349 gr/m
Length/Longueur	6 m
Price/Prix	7,30 €/Kg



Adjustable carriage Chariot intérieur movable	
Code	F85-585
Weight/Poids	117 gr
Length/Longueur	70 mm
Price/Prix	3,65 €/pc



Intermediate fixed carriage Chariot intérieur fixe	
Code	F85-483
Weight/Poids	97 gr
Length/Longueur	70 mm
Price/Prix	5,80 €/pc



Intermediate movable carriage Chariot intérieur movable	
Code	F85-587
Weight/Poids	200 gr
Length/Longueur	100 mm
Price/Prix	15,60 €/pc



Counter - Balance gasket Joint du verre (embase)	
Code	F85-477
Length/Longueur	100 m
Hardness/Fermeté	100 shore
Price/Prix	1,45 €/m



Main gasket Joint du verre (cache frontal)	
Code	F85-478
Length/Longueur	100 m
Price/Prix	0,59 €/m



Intermediate wedge / Cale plast.	
Code	Price/Prix
F85-486 Ø18 (10.10.4)	0,80 €/pc
F85-487 Ø20 (10.10.2)	0,70 €/pc
F85-484 Ø22 (8.8.4)	0,85 €/pc
F85-485 Ø25 (8.8.2)	1,00 €/pc
Mater./Matériel	POM
Length/Longueur	70 mm



Basic wedge F85-1B61/1B62/1B63 Cale plastique F85-1B61/1B62/1B63	
Code	F85-577 (5.5.4, 6.6.4, 8.8.4)
Price/Prix	0,75 €/pc



Basic wedge F85-1B64 Cale plastique F85-1B64	
Code	F85-578 (8.8.4, 10.10.4)
Price/Prix	0,81 €/pc



Basic wedge / Cale plastique	
Code	Price/Prix
F85-573 (8.8.2)	0,65 €/pc
F85-473 (8.8.4)	0,70 €/pc
F85-574 (10.10.2)	0,60 €/pc
F85-474 (10.10.4)	0,60 €/pc
Mater./Matériel	PVC
Length/Longueur	70 mm



Basic wedge / Cale plastique	
Code	Price/Prix
F85-571 (8.8.2)	0,50 €/pc
F85-471 (8.8.4)	0,50 €/pc
F85-572 (10.10.2)	0,40 €/pc
F85-472 (10.10.4)	0,40 €/pc
Mater./Matériel	PVC
Length/Longueur	70 mm



Curved wrench No13 Clé courbe No 13	
Code	F85-561
Price/Prix	26,90 €/pc

■ Price / Prix (1): **A-001/420 Anodic** | Price / Prix (2): **A-432**

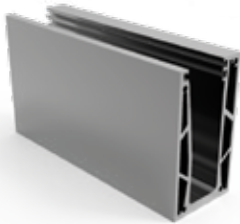
■ Accessories: Colors white RAL and black RAL at no charge. Extra charge 25% and 35% for any other RAL colors and special colors respectively.

Accessoires: RAL Blanc et RAL noir sans charge supplémentaire. Pour les couleurs RAL restantes ou couleurs spéciales, surcharge 25% & 35% respectivement.

Slim•line HD

Profiles & accessories / Profiles & accessoires

The supporting bases include tightening screws and fixing bolts/anchors.
Boulons et ancrages sont tous inclus avec les embases.



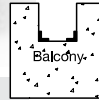
**BASE PROFILE SLIM LINE
EMBASE PROFIL SLIM LINE**

Code	F85-1B75T1
Weight/Poids	5078 gr/m
Length/Longueur	6 m
Price/Prix	7,30 €/Kg



**INTERNAL CORNER SLIM LINE
COUDE INTERIEURE**

Code	F85-562
Length/Longueur	20x20 cm
Natural Anodizing Anodization naturelle	53,25 €/pc
Anodizing in Inox Finish Anodize en teint d' Inox	56,80 €/pc



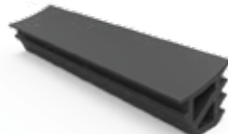
**EXTERNAL CORNER SLIM LINE
COUDE EXTERIEURE**

Code	F85-563
Length/Longueur	20x20 cm
Natural Anodizing Anodization naturelle	53,25 €/pc
Anodizing in Inox Finish Anodize en teint d' Inox	56,80 €/pc



**COUNTER-BALANCE GASKET
JOINT DE VERRE (EMBASE)**

Code	F85-417 (10.10.4)
Material	PVC
Price/Prix	0,75 €/m



**GASKET FOR BASE
JOINT POUR VERRE**

F85-448 (6.6.4)	3,25 €/m
F85-449 (8.8.4, 10.10.4)	2,48 €/m
Material	EPDM



**GASKET FOR BASE
JOINT POUR VERRE**

Code	F85-453 (5.5.4)
Material	EPDM
Price/Prix	3,85 €/m



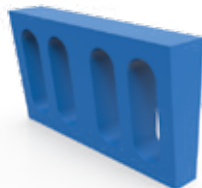
**COUNTER-BALANCE GASKET
JOINT DE VERRE (EMBASE)**

Code	F85-477 (5.5.4, 6.6.4, 8.8.4)
Material	PVC
Length/Longueur	100 m
Hardness/Dureté	100 shore
Price/Prix	1,42 €/m



**END CAP FOR TYPE SLIM LINE
EMBOU DE EMBASE TYPE SLIM LINE**

Code	F85-497
Price/Prix	13,00 €/paa



**BASIC WEDGE
CALE PLASTIQUE L70mm**

F85-575 (5.5.4, 6.6.4)	0,50 €/pc
F85-576 (8.8.4, 10.10.4)	0,45 €/pc



**COUNTER-BALANCE WEDGE PVC
JOINT DE VERRE PVC**

Code	F85-577 (5.5.4, 6.6.4, 8.8.4)
Price/Prix	0,80 €/pc



**COUNTER-BALANCE WEDGE PVC
JOINT DE VERRE PVC**

Code	F85-581 (10.10.4)
Price/Prix	0,70 €/pc



**PLASTIC GLASS SUPPORT
SUPPORT DE VERRE PLASTIQUE**

F85-591 (5.5.4)	0,70 €/pc
F85-592 (6.6.4)	0,70 €/pc
F85-593 (8.8.4)	0,70 €/pc
Material	PVC



**PLASTIC GLASS SUPPORT
SUPPORT DE VERRE PLASTIQUE**

Code	F85-594 (10.10.4)
Material	PVC
Price/Prix	0,70 €/pc



PIN / BROCHE

Code	F85-481
Material	Inox 304
Price/Prix	1,45 €/pc



**ALLEN TORX CONCRETE SCREW 10X120
ANCRAGE POUR BÉTON 10X120**

Code	EBM-10120G/2
Price/Prix	1,42 €/pc

■ Price / Prix (1): **A-001/420 Anodic** | Price / Prix (2): **A-432**

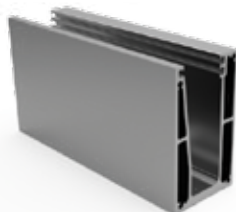
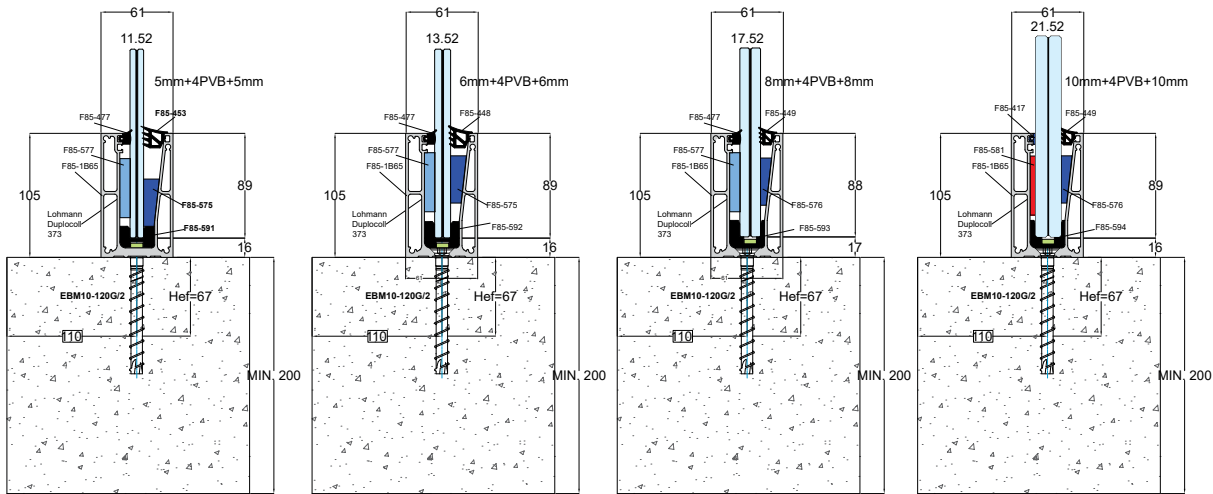
■ Accessories: Colors white RAL and black RAL at no charge. Extra charge 25% and 35% for any other RAL colors and special colors respectively.

Accessoires: RAL Blanc et RAL noir sans charge supplémentaire. Pour les couleurs RAL restantes ou couleurs spéciales, surcharge 25% & 35% respectivement.

Slim•line

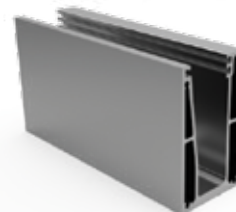
TOP MOUNT

Glass supporting bases



BASE PROFILE SLIM LINE (6m)
EMBASE PROFIL SLIM LINE (6m)

Code	F85-1B65T1
Weight/Poids	3.837 gr/m
Price/Prix	7,30 €/Kg
Profile with Milling/Fraisage 9,30 €/Kg	



BASE PROFILE SLIM LINE (3m)
EMBASE PROFIL SLIM LINE (3m)

Code	F85-1B65T2
Weight/Poids	3.837 gr/m
Price/Prix	7,30 €/Kg
Profile with Milling/Fraisage 9,30 €/Kg	



EXTERNAL CORNER SLIM LINE
COUDE EXTERIEURE

Code	F85-558
Length/Longueur	20x20 cm
Natural Anodizing Anodization naturelle	48,25 €/pc
Anodizing in Inox Finish Anodize en teint d' Inox	50,60 €/pc



INTERNAL CORNER SLIM LINE
COUDE INTERIEURE

Code	F85-559
Length/Longueur	20x20 cm
Natural Anodizing Anodization naturelle	48,25 €/pc
Anodizing in Inox Finish Anodize en teint d' Inox	50,60 €/pc

■ Price / Prix (1): A-001/420 Anodic | Price / Prix (2): A-432

■ Accessories: Colors white RAL and black RAL at no charge. Extra charge 25% and 35% for any other RAL colors and special colors respectively.

Accessoires: RAL Blanc et RAL noir sans charge supplémentaire. Pour les couleurs RAL restantes ou couleurs spéciales, surcharge 25% & 35% respectivement.



COUNTER-BALANCE GASKET JOINT DE VERRE (EMBASE)	
Code	F85-417 (10.10.4)
Mater./Matériel	PVC
Price/Prix	0,75 €/m



GASKET FOR BASE JOINT POUR VERRE	
Code	F85-448 (6.6.4)
Mater./Matériel	EPDM
Price/Prix	3,25 €/m



GASKET FOR BASE JOINT POUR VERRE	
Code	F85-449 (8.8.4, 10.10.4)
Mater./Matériel	EPDM
Price/Prix	2,48 €/m



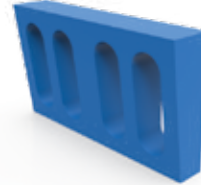
GASKET FOR BASE JOINT POUR VERRE	
Code	F85-453 (5.5.4)
Mater./Matériel	EPDM
Price/Prix	3,85 €/m



COUNTER-BALANCE GASKET JOINT DE VERRE (EMBASE)	
Code	F85-477 (5.5.4, 6.6.4, 8.8.4)
Mater./Matériel	PVC
Length/Longueur	100 m
Hardness/Fermeté	100 shore
Price/Prix	1,42 €/m



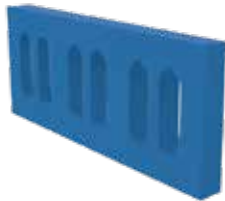
END CAP FOR TYPE SLIM LINE EMBOUT DE EMBASE TYPE SLIM LINE	
Code	F85-495
Natural Anodizing Anodization naturelle	5,70 €/pc
Anodizing in Inox Finish Anodize en teint d' Inox	6,30 €/pc
White / Black	5,80 €/pc



BASIC WEDGE CALE PLASTIQUE L70mm	
Code	F85-575 (5.5.4, 6.6.4)
Price/Prix	0,50 €/pc



BASIC WEDGE CALE PLASTIQUE L70mm	
Code	F85-576 (8.8.4, 10.10.4)
Price/Prix	0,45 €/pc



COUNTER-BALANCE WEDGE PVC JOINT DE VERRE PVC	
Code	F85-577 (5.5.4, 6.6.4, 8.8.4)
Price/Prix	0,80 €/pc



COUNTER-BALANCE WEDGE PVC JOINT DE VERRE PVC	
Code	F85-581 (10.10.4)
Price/Prix	0,70 €/pc



PLASTIC GLASS SUPPORT SUPPORT DE VERRE PLASTIQUE	
Code	F85-591 (5.5.4)
Mater./Matériel	PVC
Price/Prix	0,70 €/pc



PLASTIC GLASS SUPPORT SUPPORT DE VERRE PLASTIQUE	
Code	F85-592 (6.6.4)
Mater./Matériel	PVC
Price/Prix	0,70 €/pc



PLASTIC GLASS SUPPORT SUPPORT DE VERRE PLASTIQUE	
Code	F85-593 (8.8.4)
Mater./Matériel	PVC
Price/Prix	0,70 €/pc



PLASTIC GLASS SUPPORT SUPPORT DE VERRE PLASTIQUE	
Code	F85-594 (10.10.4)
Mater./Matériel	PVC
Price/Prix	0,70 €/pc



PIN / BROCHE	
Code	F85-481
Mater./Matériel	Inox 304
Price/Prix	1,45 €/pc



ALLEN TORX CONCRETE SCREW 10X120 ANCRAGE POUR BÉTON 10X120	
Code/Ref.	EBM-10120G/2
Price/Prix	1,52 €/pc



EXPANSION PLUG COQUE D' EXPANSION	
Code	EB01M-1060
Price/Prix	1,37 €/pc



SCREW DIN 7991 M10x70 Inox VIS DIN 7991 M10x70 Inox	
Code	D7991-0023I
Price/Prix	0,44 €/pc

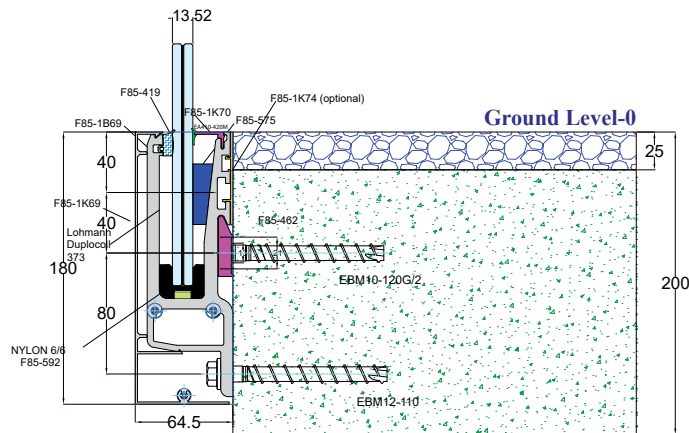
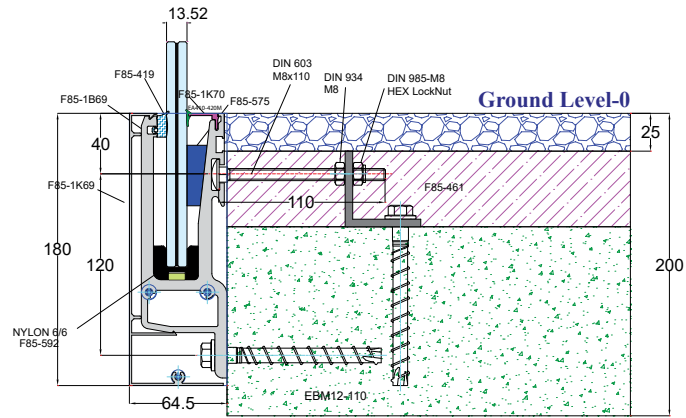
■ Price / Prix (1): **A-001/420 Anodic** | Price / Prix (2): **A-432**

■ Accessories: Colors white RAL and black RAL at no charge. Extra charge 25% and 35% for any other RAL colors and special colors respectively.

Accessoires: RAL Blanc et RAL noir sans charge supplémentaire. Pour les couleurs RAL restantes ou couleurs spéciales, surcharge 25% & 35% respectivement.

Slim•line

SIDE MOUNT & STAIRS





BASE PROFILE SLIM LINE (3m) EMBASE PROFIL SLIM LINE (3m)	
Code	F85-1B69
Weight/Poids	7734 gr/m
Price/Prix	7,30 €/Kg

BASE COVER PROFILE PROFIL CACHE FRONTAL	
Code	F85-1K69
Weight/Poids	1375 gr/m
Price/Prix	7,30 €/Kg

INTERNAL CORNER COUDE INTERIEURE	
Code	F85-541
Length/Longueur	30x30 cm
Natural Anodizing Anodization naturelle	58,95 €/pc
Anodizing in Inox Finish Anodize en teint d' Inox	58,70 €/pc

EXTERNAL CORNER COUDE EXTERIEURE	
Code	F85-542
Length/Longueur	30x30 cm
Natural Anodizing Anodization naturelle	58,95 €/pc
Anodizing in Inox Finish Anodize en teint d' Inox	58,70 €/pc

Profile with Milling/Fraisage **9,30 €/Kg**



END COVER PROFILE PROFIL CACHE FRONTAL	
Code	F85-1K70 5.5.4, 6.6.4
Weight/Poids	134 gr/m
Length/Longueur	6 m
Price/Prix	7,30 €/Kg

END COVER PROFILE PROFIL CACHE FRONTAL	
Code	F85-1K72 8.8.4, 10.10.4
Weight/Poids	110 gr/m
Length/Longueur	6 m
Price/Prix	7,30 €/Kg

STAIRS COVER PROFILE PROFIL CACHE FRONTAL	
Code	F85-1K74
Weight/Poids	280 gr/m
Length/Longueur	6 m
Price/Prix	7,30 €/Kg

COUNTER-BALANCE GASKET JOINT DE VERRE (EMBASE)	
Code	F85-417 (10.10.4)
Mater./Matériel	PVC
Price/Prix	0,75 €/m

COUNTER-BALANCE GASKET JOINT DE VERRE (EMBASE)	
Code	F85-418 (10.10.4)
Mater./Matériel	PVC
Price/Prix	0,97 €/m

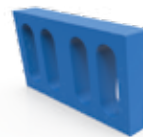


COUNTER-BALANCE GASKET JOINT DE VERRE (EMBASE)	
Code	F85-419 (5.5.4, 6.6.4, 8.8.4)
Mater./Matériel	PVC
Price/Prix	2,38 €/m

COMPONENT FOR BASE COMPOSANT POUR EMBASE	
Code	F85-461
Price/Prix	7,20 €/pc

HANGER COMPONENT COMPOSANT DE SUSPENSION	
Code	F85-462
Length/Longueur	1 m
Price/Prix	19,40 €/pc

COUNTER-BALANCE GASKET JOINT DE VERRE (EMBASE)	
Code	F85-477 (5.5.4, 6.6.4, 8.8.4)
Mater./Matériel	PVC
Length/Longueur	100 m
Hardness/Dureté	100 shore
Price/Prix	1,42 €/m



PIN / BROCHE	
Code	F85-481
Mater./Matériel	Inox 304
Price/Prix	1,35 €/pc

END CAP EMBOUT DE EMBASE	
Code	F85-496
Price/Prix	10,20 €/pc
Natural Anodizing Anodization naturelle	9,20 €/pc
Anodizing in Inox Finish Anodize en teint d' Inox	9,30 €/pc
White / Black	9,00 €/pc

BASIC WEDGE FOR GLASS CALE PLASTIQUE L70mm	
Code	F85-575 (5.5.4, 6.6.4)
Price/Prix	0,50 €/pc

BASIC WEDGE FOR GLASS CALE PLASTIQUE L70mm	
Code	F85-576 (8.8.4, 10.10.4)
Price/Prix	0,45 €/pc

COUNTER-BALANCE WEDGE PVC JOINT DE VERRE PVC	
Code	F85-577 (5.5.4, 6.6.4, 8.8.4)
Price/Prix	0,80 €/pc

■ Price / Prix (1): **A-001/420 Anodic** | Price / Prix (2): **A-432**

■ Accessories: Colors white RAL and black RAL at no charge. Extra charge 25% and 35% for any other RAL colors and special colors respectively.

Accessoires: RAL Blanc et RAL noir sans charge supplémentaire. Pour les couleurs RAL restantes ou couleurs spéciales, surcharge 25% & 35% respectivement.


COUNTER-BALANCE WEDGE PVC
JOINT DE VERRE PVC

Code	F85-581 (10.10.4)
Price/Prix	0,70 €/pc


PLASTIC GLASS SUPPORT
SUPPORT DE VERRE PLASTIQUE

Code	F85-591 (5.5.4)
Mater./Matériel	PVC
Price/Prix	0,70 €/pc


PLASTIC GLASS SUPPORT
SUPPORT DE VERRE PLASTIQUE

Code	F85-592 (6.6.4)
Mater./Matériel	PVC
Price/Prix	0,70 €/pc


PLASTIC GLASS SUPPORT
SUPPORT DE VERRE PLASTIQUE

Code	F85-593 (8.8.4)
Mater./Matériel	PVC
Price/Prix	0,70 €/pc


PLASTIC GLASS SUPPORT
SUPPORT DE VERRE PLASTIQUE

Code	F85-594 (10.10.4)
Mater./Matériel	PVC
Price/Prix	0,70 €/pc


ALLEN TORX CONCRETE SCREW 10X120
ANCRAGE POUR BÉTON 10X120

Code/Ref.	EBM-10120G/2
Price/Prix	1,52 €/pc


GLAZING GASKET 1mm
JOINT DE VITRAGE 1mm

Code	EA410-420M
Mater./Matériel	EPDM
Length/Longueur	350 m
Price/Prix	0,37 €/m


GLAZING GASKET
JOINT DE VITRAGE

Code	US521-01 (5.5.4, 8.8.4, 10.10.4)
Mater./Matériel	EPDM
Price/Prix	0,65 €/m

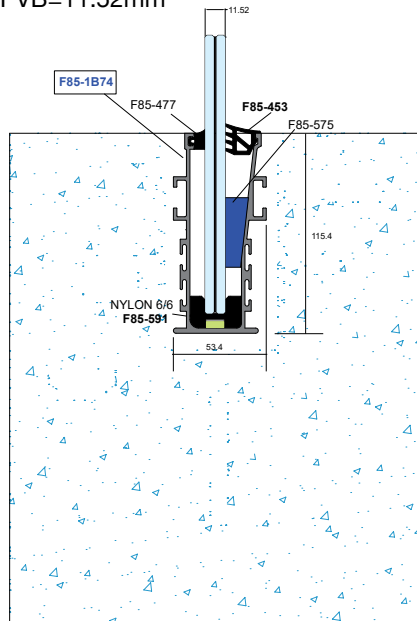

CONCRETE SCREW Ø12-110
ANCRAGE POUR BÉTON Ø12-110

Code	EBM12-110
Price/Prix	2,13 €/pc

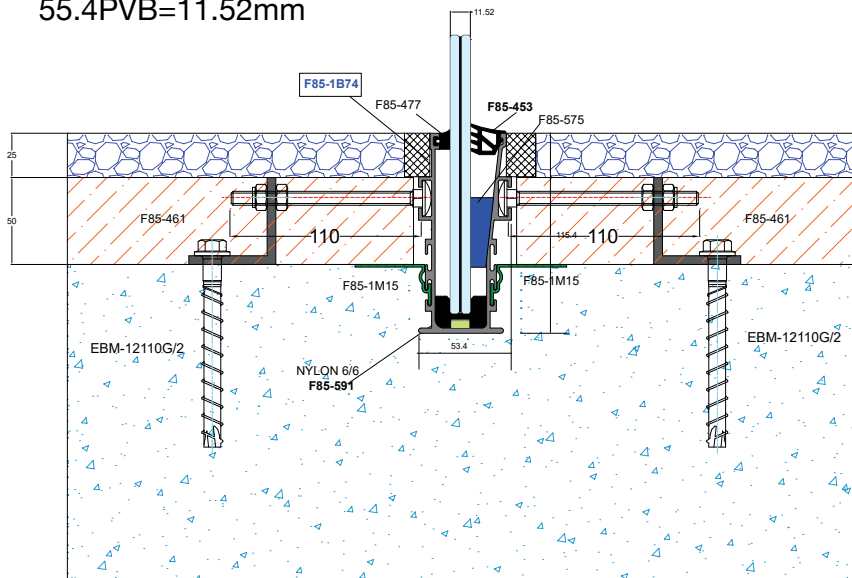
Slim•line

IN-FLOOR

PVB=11.52mm

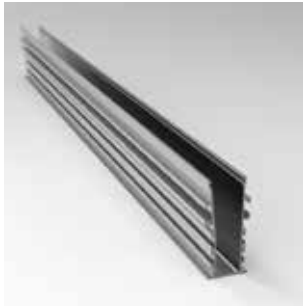


55.4PVB=11.52mm



Slim•line

IN-FLOOR



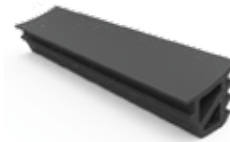
**BASE PROFILE SLIM LINE
EMBASE PROFIL SLIM LINE**

Code	F85-1B74
Weight/Poids	2532 gr/m
Price/Prix	7,30 €/Kg



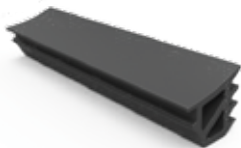
**COUNTER-BALANCE GASKET
JOINT DE VERRE (EMBASE)**

Code	F85-417 (10.10.4)
Mater./Matériel	PVC
Price/Prix	0,75 €/m



**GASKET FOR BASE FOR GLASS
JOINT POUR VERRE**

Code	F85-448 (6.6.4)
Mater./Matériel	EPDM
Price/Prix	3,25 €/m



**GASKET FOR BASE FOR GLASS
JOINT POUR VERRE**

Code	F85-449 (8.8.4, 10.10.4)
Mater./Matériel	EPDM
Price/Prix	2,45 €/m



**GASKET FOR BASE FOR GLASS
JOINT POUR VERRE**

Code	F85-453 (5.5.4)
Mater./Matériel	EPDM
Price/Prix	3,85 €/m



**COMPONENT FOR BASE
COMPOSANT POUR EMBASE**

Code	F85-461
Price/Prix	7,20 €/pc



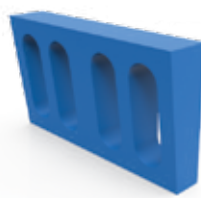
**GASKET FOR BASE FOR GLASS
JOINT POUR VERRE 6+6 4PVB**

Code	F85-477 (5.5.4, 6.6.4, 8.8.4)
Mater./Matériel	PVC
Length/Longueur	100 m
Hardness/Dureté	100 shore
Price/Prix	1,42 €/m



**BASIC WEDGE FOR GLASS
CALE PLASTIQUE L70mm**

Code	F85-575 (5.5.4, 6.6.4)
Price/Prix	0,50 €/pc



**BASIC WEDGE FOR GLASS
CALE PLASTIQUE L70mm**

Code	F85-576 (8.8.4, 10.10.4)
Price/Prix	0,45 €/pc



**COUNTER-BALANCE WEDGE PVC
JOINT DE VERRE PVC**

Code	F85-577 (5.5.4, 6.6.4, 8.8.4)
Price/Prix	0,80 €/pc



**COUNTER-BALANCE WEDGE PVC
JOINT DE VERRE PVC**

Code	F85-581 (10.10.4)
Price/Prix	0,70 €/pc



**PLASTIC GLASS SUPPORT
SUPPORT DE VERRE PLASTIQUE**

Code	F85-591 (5.5.4)
Mater./Matériel	PVC
Price/Prix	0,70 €/pc



**PLASTIC GLASS SUPPORT
SUPPORT DE VERRE PLASTIQUE**

Code	F85-592 (6.6.4)
Mater./Matériel	PVC
Price/Prix	0,70 €/pc



**PLASTIC GLASS SUPPORT
SUPPORT DE VERRE PLASTIQUE**

Code	F85-593 (8.8.4)
Mater./Matériel	PVC
Price/Prix	0,70 €/pc



**PLASTIC GLASS SUPPORT SUPPORT
DE VERRE PLASTIQUE**

Code	F85-594 (10.10.4)
Mater./Matériel	PVC
Price/Prix	0,70 €/pc

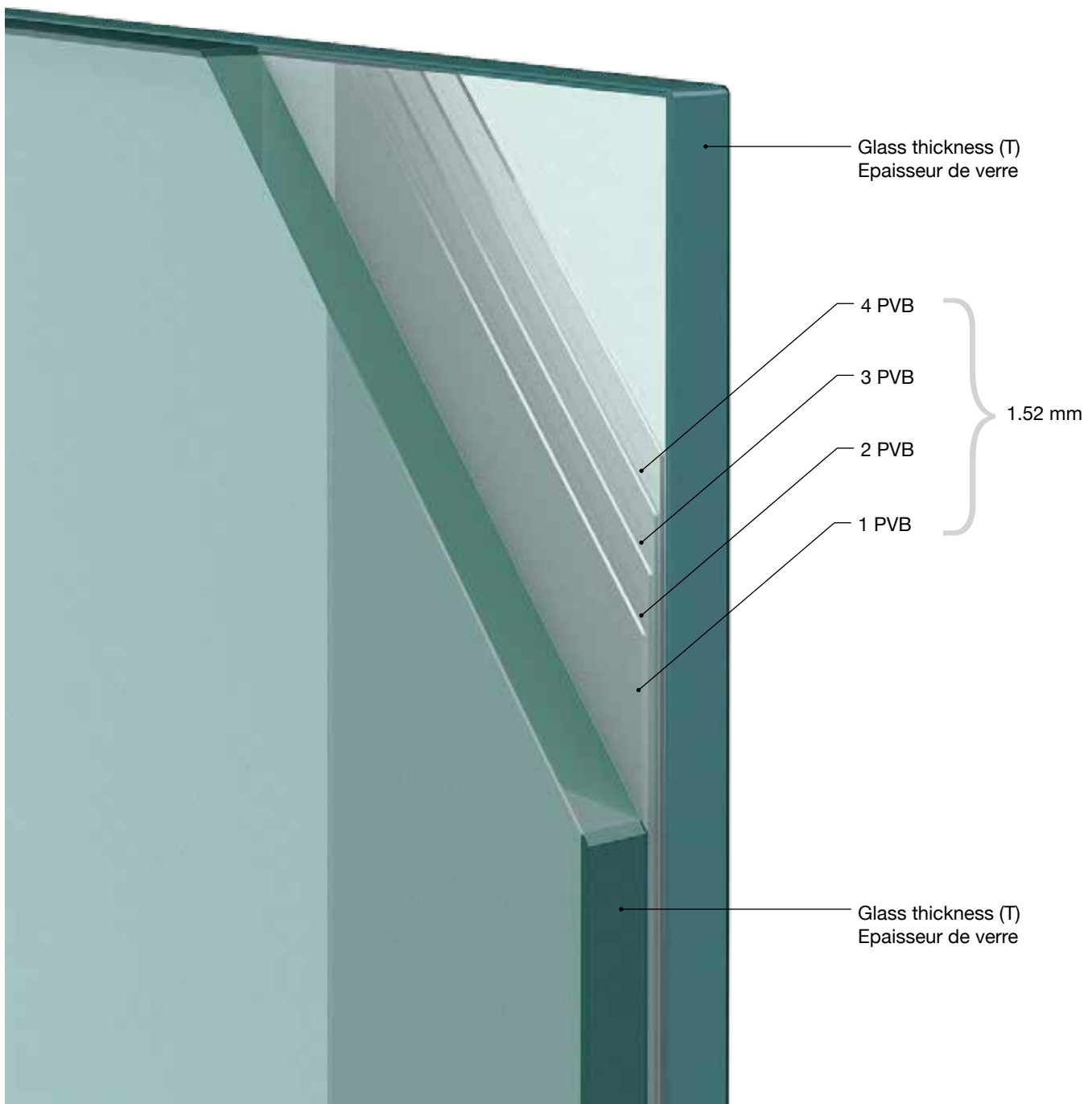
■ Price / Prix (1): **A-001/420 Anodic** | Price / Prix (2): **A-432**

■ Accessories: Colors white RAL and black RAL at no charge. Extra charge 25% and 35% for any other RAL colors and special colors respectively.

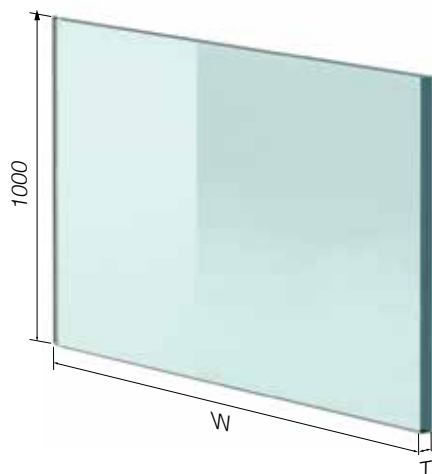
Accessoires: RAL Blanc et RAL noir sans charge supplémentaire. Pour les couleurs RAL restantes ou couleurs spéciales, surcharge 25% & 35% respectivement.

Glass / Verre

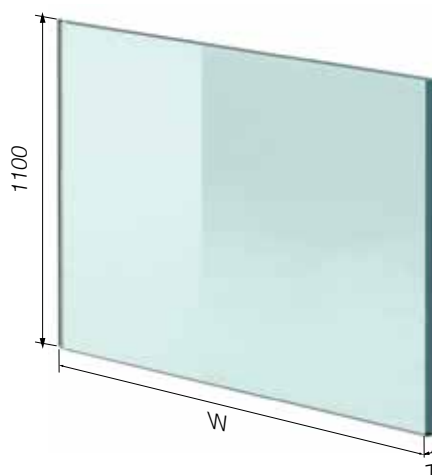
Glass detail / Detail du verre



Glass / Verre



Glass dimensions
Dimensions de verre 1000 mm



Glass dimensions
Dimensions de verre 1100 mm

Height / La taille: 1000 mm		T: 8.8.4 (17.52)	
Code	W	Weight/Poids Kg	Price/Prix €/m ²
F85-GL16U10	600	24	230,00
F85-GL16U11	800	32	230,00
F85-GL16U07	900	36	230,00
F85-GL16U08	1000	40	230,00
F85-GL16U12	1100	44	230,00
F85-GL16U09	1200	48	230,00
F85-GL16U13	1300	52	230,00

* Immediately available from stock!
Immédiatement disponible en stock!

Height / La taille: 1000 mm		T: 5.5.2 (10.76)	
Code	W	Weight/Poids Kg	Price/Prix €/m ²
F85-GL10U03	500	12.5	70,00
F85-GL10U04	600	15	70,00
F85-GL10U05	800	20	70,00
F85-GL10U01	900	22.5	70,00
F85-GL10U02	1000	25	70,00
F85-GL10U06	1100	27.5	70,00
F85-GL10U07	1200	30	70,00

* Immediately available from stock!
Immédiatement disponible en stock!

Height / La taille: 1100 mm		T: 8.8.4 (17.52)	
Code	W	Weight/Poids Kg	Price/Prix €/m ²
F85-GL16U14	600	26.4	230,00
F85-GL16U15	800	35.2	230,00
F85-GL16U16	900	39.6	230,00
F85-GL16U12	1000	44	230,00
F85-GL16U17	1100	48.4	230,00
F85-GL16U18	1200	52.8	230,00

* Immediately available from stock!
Immédiatement disponible en stock!

Special packaging (gooden pallet) charged 20 €/pal (max Weight 400 kg)
Emballage spécial (palette gooden) chargé 20 €/pal (max Poids 400 kg)

Dimensions may vary due to perimetric grinding.
Les dimensions peuvent varier en raison de broyage périmétrique.

Accessories glass supporting system

Accessoires et viserie

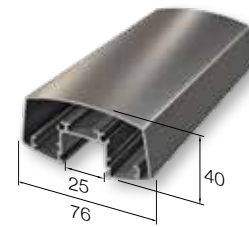
Handrail profiles / Main courante profils



Round handrail Main courante profil	
Code	F50-200
Weight/Poids	814 gr/m
Length/Longueur	6 m
Price/Prix	7,00 €/Kg



Round handrail Ø50 Main courante Ø50	
Code	F85-202
Weight/Poids	721 gr/m
Length/Longueur	6 m
Price/Prix	7,30 €/Kg



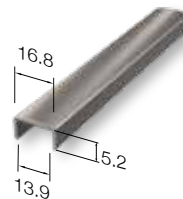
Oval shaped handrail Main courante ovale	
Code	F85-203
Weight/Poids	1096 gr/m
Length/Longueur	6 m
Price/Prix	7,30 €/Kg



Round handrail Ø50 Main courante Ø50	
Code	F85-204
Weight/Poids	973 gr/m
Length/Longueur	6 m
Price/Prix	7,30 €/Kg



Handrail 30x80 Main courante 30x80	
Code	F50-201
Weight/Poids	1350 gr/m
Length/Longueur	6 m
Price/Prix	7,00 €/Kg

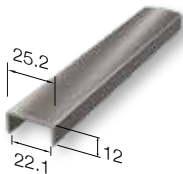


Handrail 6.6.2/6.6.4 Main courante pour verre 6.6.2/6.6.4	
Code	F85-313
Weight/Poids	99 gr/m
Length/Longueur	6 m
Price/Prix	7,30 €/Kg



Handrail 8.8.4 Main courante pour verre 8.8.4	
Code	F85-317
Weight/Poids	198 gr/m
Length/Longueur	6 m
Price/Prix	7,30 €/Kg

Handrail caps / Embout des main courantes



Handrail 10.10.4 Main courante pour verre 10.10.4	
Code	F85-321
Weight/Poids	219 gr/m
Length/Longueur	6 m
Price/Prix	7,30 €/Kg



Handrail end cap F85-203 Embout de main courante F85-203	
Code	F85-403
Price/Prix (1)	4,50 €/pc
Price/Prix (2)	4,60 €/pc
White / Black	4,50 €/pc



Handrail end cap F85-202/204 Embout de main courante F85-202/204	
Code	F85-404
Price/Prix (1)	2,60 €/pc
Price/Prix (2)	2,70 €/pc
White / Black	2,30 €/pc

COLORS PRICELIST	
CATEGORY A	0,60 €
CATEGORY A2	0,75 €
CATEGORY SMART	0,85 €
CATEGORY B	0,90 €
CATEGORY C	1,00 €
CATEGORY D	1,10 €
CATEGORY E	1,40 €
CATEGORY F	1,60 €
WOOD COLORS	2,95 €
ANODISE A-432 FOR RAILING PROFILE F-50	1,90 €
ANODISE A-432 FOR RAILING PROFILE CRYSTAL LINE	1,90 €



Handrail cap F50-200 / Embouts	
Code	4434
Price/Prix (1)	1,40 €/pc
Price/Prix (2)	1,45 €/pc
White / Black	1,30 €/pc



Handrail cap F50-200 flat Embout de main courante F50-200	
Code	4453
Price/Prix (1)	2,20 €/pc
Price/Prix (2)	2,25 €/pc
White / Black	2,20 €/pc



Handrail end cap F50-201 Embout de main courante F50-201	
Code	4447
Price/Prix (2)	2,70 €/pc
White / Black	2,65 €/pc

■ Price / Prix (1): A-001/420 Anodic | Price / Prix (2): A-432

■ Accessories: Colors white RAL and black RAL at no charge. Extra charge 25% and 35% for any other RAL colors and special colors respectively.

Accessoires: RAL Blanc et RAL noir sans charge supplémentaire. Pour les couleurs RAL restantes ou couleurs spéciales, surcharge 25% & 35% respectivement.

Accessories glass supporting system

Accessoires et viserie

Handrail connection accessories, seam covers / Connecteurs angulaires



Handrail connector F85-202/204 straight Coude de F85-202/204 droit	
Code	4251
Price/Prix (1)	2,90 €/pc
Price/Prix (2)	3,00 €/pc
White / Black	2,80 €/pc



Handrail connector F85-202/204 Angled Coude de F85-202/204 en angle	
Code	4253
Price/Prix (1)	11,00 €/pc
Price/Prix (2)	11,10 €/pc
White / Black	11,00 €/pc



Handrail seam cover F85-203 Cache du mur de main courante F85-203	
Code	F85-402
Price/Prix (1)	4,50 €/pc
Price/Prix (2)	4,60 €/pc
White / Black	4,50 €/pc



Handrail seam cover Ø50 with cover Embases et caches pour main courante	
Code	4509Z
Price/Prix (1)	5,10 €/pc
Price/Prix (2)	5,20 €/pc
White / Black	6,20 €/pc

Handrail supports / Support de main courante



Wall support for handrail F85-202 Fixation murale de main courante F85-202	
Code	F85-452
Price/Prix (1)	14,60 €/pc
Price/Prix (2)	14,70 €/pc
White / Black	14,60 €/pc



Wall support for handrail F50-200 Platin de mur pour main courante	
Code	4134
Price/Prix (1)	3,30 €/pc
Price/Prix (2)	3,40 €/pc
White / Black	2,70 €/pc



Wall support for handrail F50-200 Platin de mur pour main courante	
Code	4140
Price/Prix (1)	6,45 €/pc
Price/Prix (2)	6,55 €/pc
White / Black	6,40 €/pc



Wall support for handrail F50-200 Platin de mur pour main courante	
Code	4141
Price/Prix (1)	2,65 €/pc
Price/Prix (2)	2,75 €/pc
White / Black	1,90 €/pc



Wall support for handrail F50-200 Platin de mur pour main courante	
Code	4165
Price/Prix (1)	9,80 €/pc
Price/Prix (2)	9,90 €/pc
White / Black	9,50 €/pc



Handrail support F50-200 Fixation articule sur verre F50-200	
Code	F85-451
Price/Prix (1)	12,40 €/pc
Price/Prix (2)	12,50 €/pc
White / Black	12,40 €/pc



Handrail support F50-200 Fixation articule Sur Verre	
Code	4148-200
Price/Prix	48,00 €/pc



Handrail support F50-200 Fixation articule sur verre	
Code	4148-201
Price/Prix	48,50 €/pc



Handrail support F50-201 Fixation articulé sur verre F50-201	
Code	F85-454
Price/Prix (2)	16,10 €/pc

Accessories glass supporting system

Accessoires et viserie

Handrail gaskets / Joints de main courante



"U" shaped gasket / Joint	
Code	F85-406 (8.8.4)
Mater./Matériel	EPDM
Price/Prix	2,47 €/m

For glass 8 mm+4PVB+ 8 mm
Pour le verre 8 mm + 4PVB + 8 mm



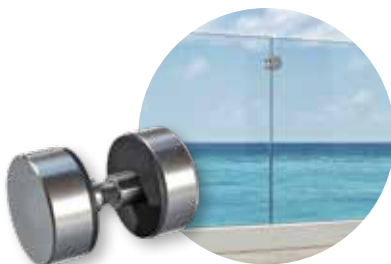
"U" shaped gasket / Joint	
Code	F85-407 (10.10.4)
Mater./Matériel	EPDM
Price/Prix	2,28 €/m

For glass 10 mm+4PVB+ 10 mm
Pour le verre 10 mm + 4PVB + 10 mm



Slug gasket / Joint de vitrage	
Code	EA410-420M
Mater./Matériel	EPDM
Price/Prix	0,36 €/m

Miscellaneous / Divers



Glass alignment rosette Rosace Ø30 d'align. verre	
Code	F85-D130 (8.8.4) (10.10.4)
Mater./Matériel	Inox 316
Price/Prix	17,40 €/pc



Type A cover extractor Extracteur pour cache frontal F85 Type A	
Code	F85-E011
Price/Prix	1,40 €/pc



Neutral silicon	
Code	UA210.02BLX
Price/Prix	3,64 €/pc

Fixing screws / Viserie



Inox allen screw M10x70 Vis M10x70 inox	
Code	EB912-1070
Price/Prix	0,63 €/pc



Expansion plug / Nut	
Code	EB01M-1060
Price/Prix	1,37 €/pc



Concrete Torx 7.5x112 Vis 7.5x112	
Code	EBM-75112G
Price/Prix	0,12 €/pc



Concrete Screw Ø12-110	
Code	EBM12-110
Price/Prix	2,13 €/pc



Allen Torx Concrete Screw Ø10x120	
Code	EBM-10120G/2
Price/Prix	1,52 €/pc



Screw DIN 7991 M10x70 Inox Vis DIN 7991 M10x70 Inox	
Code	D7991-0023I
Price/Prix	0,44 €/pc

■ Price / Prix (1): **A-001/420 Anodic** | Price / Prix (2): **A-432**

■ Accessories: Colors white RAL and black RAL at no charge. Extra charge 25% and 35% for any other RAL colors and special colors respectively.

Accessoires: RAL Blanc et RAL noir sans charge supplémentaire. Pour les couleurs RAL restantes ou couleurs spéciales, surcharge 25% & 35% respectivement.



320 11 Inofita Viotia, Greece

T. +30 22620 47000

F. +30 22620 47090

www.aluminco.com

info@aluminco.com