



W&D

ALUMINCO WALL&DECO CLADDING
Modern wall cladding solutions



**NEW
SYSTEM**

WALL&DECO CLADDING

Modern wall cladding solutions

Modern architecture goes far beyond maximum energy efficiency, as it seeks solutions with style and aesthetics.

ALUMINCO, in harmony with the new trends, offers unique systems that make a difference at all levels, but in particular they focus on the well-being of the users.

Minimal constructions of unique aesthetics.

Wall&Deco is ALUMINCO's proposal for modern wall cladding systems. It is a light system that provides coverage of large surfaces and it is applicable to the inside and to the outside of buildings, enhancing the great aesthetics and upgrading the energy levels.



Characteristics & Advantages

- > Designed to meet the new architectural trend
- > Provides variety of designs in terms of typologies, applications, colors and textures.
- > Allows the installation of LED light stripes.
- > Easy construction and assembly, quick and accurate placement onto the walls.
- > Profile placement in all typologies is achievable with hidden connections (e.g hidden installation screws, invisible support base).
- > The common way of profile assembly creates alternative shape suggestions, upgrading the aesthetic result.
- > Allows complex technical applications – combinations with curtain walls, windows, entrance doors, office partition profiles, garage doors, front gates etc.
- > Suitable for large surfaces of professional and commercial buildings, offices and modern residences.
- > Corrosion resistant, thanks to the aluminum resilience through the processing of its surfaces.

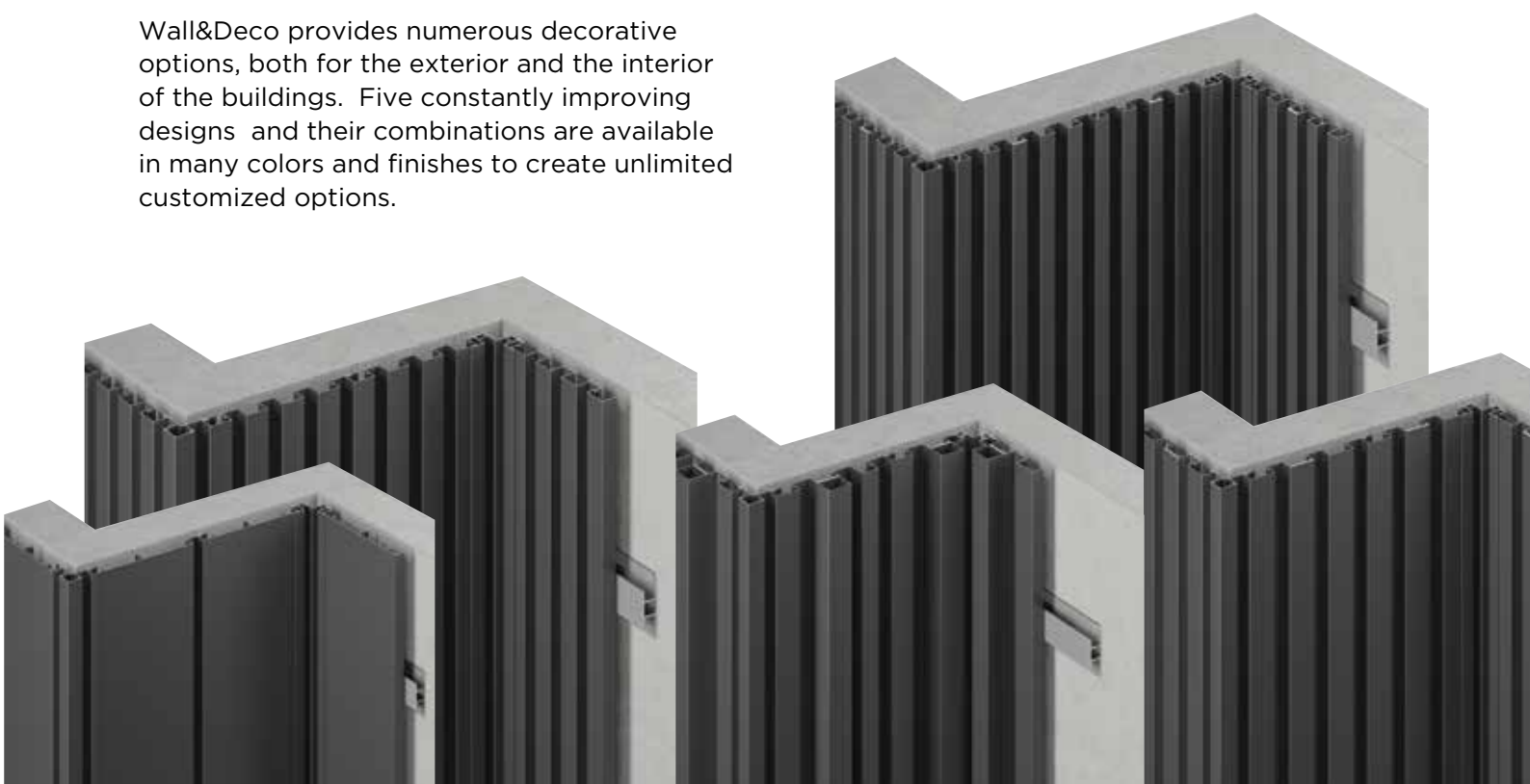


W&D



Plenty of decorative options

Wall&Deco provides numerous decorative options, both for the exterior and the interior of the buildings. Five constantly improving designs and their combinations are available in many colors and finishes to create unlimited customized options.



A PRODUCT



In symmetrical and non-symmetrical lines, with clambered or flat sections, the WD profiles are connected steadily with each other, providing an elegant result. Additionally, the different designs can match with each other for an even more creative design.

The WD cladding covers all modern architectural needs by offering an aesthetic solution, as well as fast production, easy installation and customization.





INVESTMENT IN PHOTOVOLTAIC SYSTEMS WITH THE KNOW-HOW AND THE CREDIBILITY OF ALUMINCO!

According to the National Plan of Energy and Climate, 23,4% of consumed energy in our country should be generated by Renewable Energy Sources until 2022, while this percentage is increasing to 35% up until 2030, which means that there is a need for new projects in this sector.

Especially in the production of electricity, national legislation (N. 3851/2010) aims to the participation of the RES in gross energy consumption in a percentage of at least 60% up until 2030.

Concerning the photovoltaic systems, the goal is to reach total electricity production at 11,3% in 2022 and at 20,7% in 2030.

Therefore, a new investment environment is being created, with satisfying profits and benefits, both for individuals who install them in their roofs, and for those who saw the RES in a more professional manner and they invested in panels for entire areas.



PHOTOVOLTAIC SUPPORT SYSTEMS

A full range of photovoltaic support systems by ALUMINCO!

The energy upgrade of buildings, in combination with self-produced electricity for covering the needs, is the most reliable way of dealing with the unbearable energy costs and also the only way of shielding households and enterprises against the uncertainty of fuel and energy price changes in the upcoming years.

ALUMINCO S.A, one of the leading Greek aluminum companies, in the context of a broader green strategy and sustainable development, pioneers in the field of RES with a full range of support systems for photovoltaic parks, tile and industrial roofs.

The main advantages is the time reduction in installation (up to 50% with the smart lock system), the easy assembly, the properly studied application in either portrait or landscape orientation, made of highly corrosion-resistant aluminum alloys, with high-quality materials in compliance with Eurocodes .

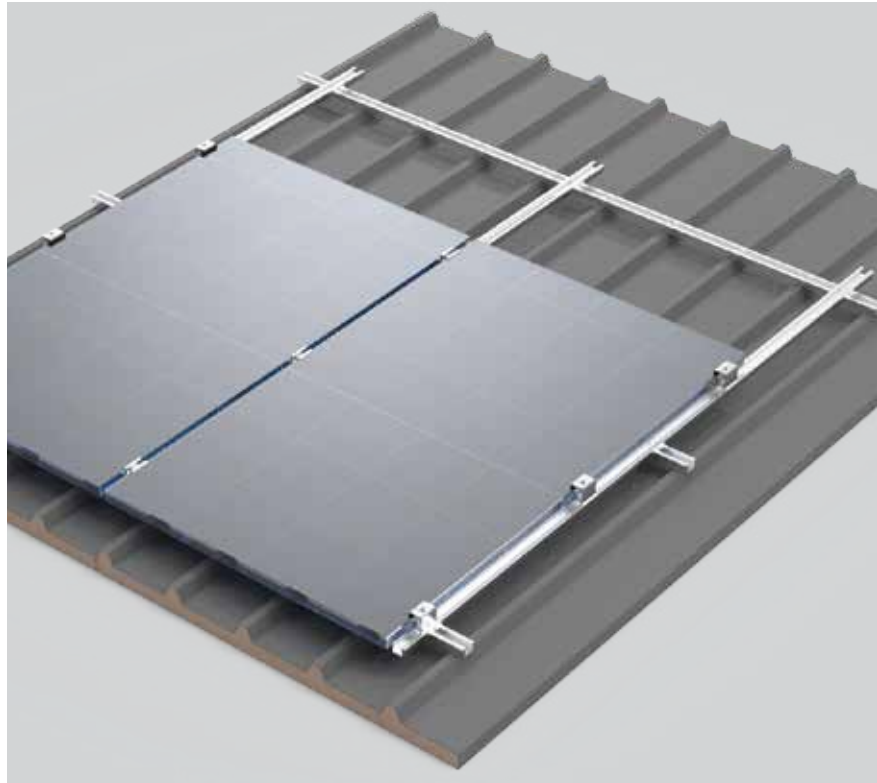
The support systems are designed and produced in the modern ALUMINCO's facilities, at Inofita Viotias and the premises in Thessaloniki, capable of providing the products immediately without any quality compromise.

FAST LOCK

Photovoltaic support system on industrial roofs

Photovoltaic support system on industrial roofs

The photovoltaic support system on industrial roof consists of an aluminum rail on which photovoltaic panels are placed and the rail support is being done by a specially designed self-drilling screw, or a string hem, depending on the support base and the panels' orientation (Landscape / Portrait). The rail is designed to contain the panel up to its marginal support with the screw. The photovoltaic panels are being restrained normally with side clamps of type Z and with intermediate clamps of type Ω .



ELECTRA

Photovoltaic support system on flat roofs

The photovoltaic support system on flat roofs (roof tops and roofs in general) has the ability to support multicrystal and monocrystal photovoltaic panels and delivered in raw materials (profiles and accessories or ready-made material, cut and drilled based on demands and panel dimensions of the ongoing project.

ESTIA

Photovoltaic support systems on tiled roofs.

The photovoltaic support system on tiled roofs, in combination with the pioneering casted aluminum tiles of ALUMINCO, which are patented internationally, ensures flawless waterproofing of the whole project, without leaks of any kind to the interior rooms. The aluminum tiles are available in different types - Roman, Dutch, French and Swedish, suitable with the corresponding ceramics and every type of transom in the market.



FAETHON

Photovoltaic support systems in parks

For the bases constructions, the profiles need only vertical cutting and drilling without the need of other special tools. In this way, all fabricators have the ability to construct each base at low cost, regardless of the size. The triangles that form each frame may be pre-assembled by the installer and be ready to be placed, reducing significantly the total time needed by the installation crews at the construction site.



ALUMINCO is present at aluminum frames forum of nZEB Roadshow in Athens

After a long tour in many cities of Greece, Tuesday 16 & Wednesday 17 of May, all members of the Hellenic Institute of Passive Residency, in collaboration with TUV/NORD, were present in the center of the capital, in Innovathens at Technopolis in order to organize two forums. The first was about thermal insulation and modern insulators and the second one, was about the Greek frames and their use on passive buildings.

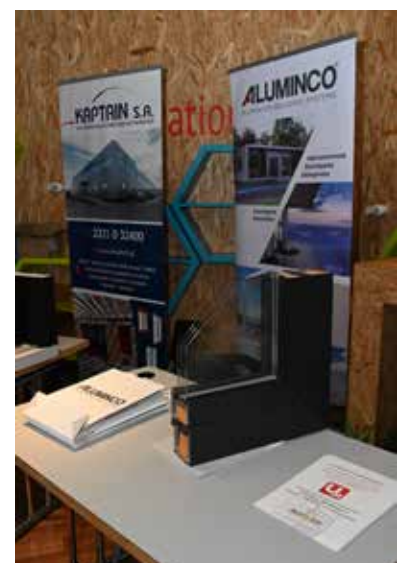
ALUMINCO participated on the second day (17 of May), where Mr. Apostolis Christopoulos, company's senior designer, who, based on company's moto "Building a sustainable future", presented in full scale the innovative system, certified for passive buildings, ALUMINCO W4900, while also referred on the advanced systems ALUMINCO W4750 and ALUMINCO SL2700, which meet the specifications of passive buildings and offer solutions that focus on the energy saving and the protection of the environment with low energy footprint.



Also, extensive reference was made to the use of the company's advanced systems in The Nidus passive house in Kalamata. The Nidus building-jewel of Kalamata has been built by the Gonzalez Malama architectural group (<https://www.gm-a.gr>), according to passive building standards the with certified Aluminco frames, and has been featured in magazines, in Greece and abroad, that deal with buildings of special architecture value and low energy consumption, as it uniquely combines the best elements of both worlds.



The nZEB Roadshow is a European project that aims to inform the public about Near Zero Energy Buildings and highlighting the important advantages for the future of the planet. As part of this project, EIPAK (Hellenic Passive Building Institute) organizes events in various cities of the country, under the auspices of the Ministry of Environment & Energy and the Bank of Greece.





ALUMINCO W4900 Passive House Redefines the sound reduction index

Modern, sustainable architecture goes far beyond maximum energy efficiency. The W4900 aluminum opening system for passive buildings redefines the sound reduction index with an acoustic performance of 52dB.

The ALUMINCO W4900 system is one of the top performing passive opening systems in Greece that meets the strict criteria set by the German Passive House Institute PHI (Passive House Institute). The excellent thermal insulation performance $U_w=0.78 \text{ W/m}^2\text{K}$ makes it uniquely responsive to the implementation of passive building constructions.

As of today, ALUMINCO's proposal for robust solutions of opening thermal insulation systems, specially designed for passive buildings, **excels in sound reduction with a performance of up to 52 dB.**

In addition to excellent energy performance to passive house standards, the range combines the proven benefits of aluminum windows, enables robust construction of high specifications and features a wide range of options sought by architects.



ISLA BROWN CORINTHIA RESORT & SPA, A MEMBER OF BROWN HOTELS, AGIOI THEODOROI, CORINTHOS, GREECE

**An architectural landmark of luxury, well-being
and infinite view!**

A few words about the project

Uniquely luxurious and overlooking the Saronic Gulf, Isla Brown Corinthia is created with the sole purpose of hosting ideal holiday dream. Isla Brown Corinthia, consists of 166 luxurious rooms and suites, with common areas including lobby, indoor bar with sea view, all day restaurant, spa and gym as well as an impressive infinity pool with bar and lounge seating areas that offer panoramic view of the Corinthian. It also includes a children's park and infrastructure for water sports, constituting a haven of high aesthetic hospitality just 40' from Athens and 50' from Athens International Airport. In addition, Isla Brown Corinthia is also a privileged destination for conferences, with a space of 550 sq.m. which can serve any kind of business and social event.

Architects: Elastic Architects

Aluminco Products: Architectural Systems for doors and windows, railings,

City: Agioi Theodoroi, Corinthos,

Country: Greece

The challenge

The intriguing architecture of Isla Brown Corinthia is very vivid in the rooms and suites as well, blending perfectly with the ever-changing views of the sea. The finest of materials were handpicked for the interior, offering a sense of bespoke, organic luxury. None other than the award-winning team of Elastic Architects is the creative mind behind this bold concept. The staggering location, the signature Brown Hotels personality and, of course, the wild mythology of the area have forged the narrative of this resort! Every bit of the design narrates the fiery story of the giant Typhoeus, while incorporating the breathtaking, 180° view of the Corinthian Gulf.

The total remake of the iconic “Hanikian” hotel, dating in the Mid-1970’s, is informed by the topography of its legendary location on the Corinthian Gulf, introducing a new identity. The formerly rectangular, massive, repetitive modernist building is now endowed with an organic form, inspired by landscape formations under the bright sun. The design concept for the new, 166-room hotel, highlights the material and sensual properties of its location on the northern edge of the Greek Volcanic Arc, besides “Sousaki”, a craterless volcano silent for 2.7million years. According to mythology, the volcano is home to the giant Typhoeus, his open arms spanning east to west. Inspired by this embodiment of a volcanic eruption, the design introduces panoramic views, and emulates the fluidity of lava: The square volumes of the building become a stack of “pebbles”, as if arranged by the giant himself. The hotel includes three room typologies, with luxury guestrooms and suites providing indoor dining, two bathrooms, and a freestanding bathtub. Public spaces include a lobby, indoor sea view bar with a bronze sculptural countertop under an undulating ceiling, an all-day dining restaurant, gym, and spa, and a spectacular infinity rooftop shallow pool with bar and lounge seating areas offering extended views over the Corinthian Gulf. Overlapping curved surfaces create a visual brand language throughout, on exterior and interior walls, finishes, lighting design, and decoration. The color palette features volcanic shades of terracotta and amber, bronze mirrors, gold, and tinted glass. Custom-





made, functional furniture is designed for all public spaces, introducing a contemporary sensibility, inspired by key natural elements.

The result

Brown Beach Resort inaugurates a new type of luxury and of course the quality signature of Aluminco could not be missing from it! A space for relaxation, entertainment and well-being of the traveler is located in the emblematic area of Corinthia, just 50' by car from Athens. With its special style and characteristic curves, the first design resort of the group in Greece, has 166 design rooms and 110 bungalows, which were curated by the award-winning Elastic Architects team.



The endless blue that stretches at the foot of the resort create a unique experience. From the balcony of each room or swimming in the pool area, the Argosaronic gulf stretches out endlessly, giving peace to the visitor. The resort could not lack the infrastructure for additional activities, such as restaurants, tennis courts, a spa and a children's park.

The top-of-the-line Aluminco systems, due to their outstanding performance and unrivaled quality, perfectly suited the modern and sophisticated design of the resort. The resort spaces are highly aligned with the design philosophy of the advanced ALUMINCO architectural systems, allowing for maximum natural light and providing optimal panoramic views of the Argosaronic Sea, while offering a rich, contemporary guest experience, which achieves a natural balance between land and sea. The



high specification SL 2450 and SL 2700 retractable systems have deservedly earned their place due to their combination of high thermal insulation, impressive features and large openings.

The integrated innovative ALUMINCO systems allow a significant increase in acoustic performance compared to traditional types. The EW 50 glass curtain system that was used has a high sound insulation performance as well as the possibility for maximum natural lighting in the interior space, creating an ideal environment for the users of the building. Its ergonomic properties characterize its uniqueness and flexibility while offering excellent aesthetics and functionality. The EW50 includes a multitude of construction solutions and works perfectly with all shading systems. W450 is a complete opening thermal insulation system, it deservedly won its place in the project, due to the high specifications that meet the modern requirements of energy efficiency, sound reduction, aesthetics and safety.

The resort's architectural team also recognized ALUMINCO's Crystalline series as the ideal solution for the hotel's glass balustrades. It allowed them to create a modern and sophisticated design that fits perfectly with the architecture of the resort. The Crystalline range of glass balustrades stands out

ALUMINCO PRODUCTS USED FOR THE PROJECT:



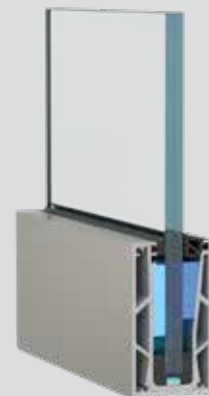
SL2700



W450



EW50



CRYSTALLINE
SLIM LINE
TOP MOUNT

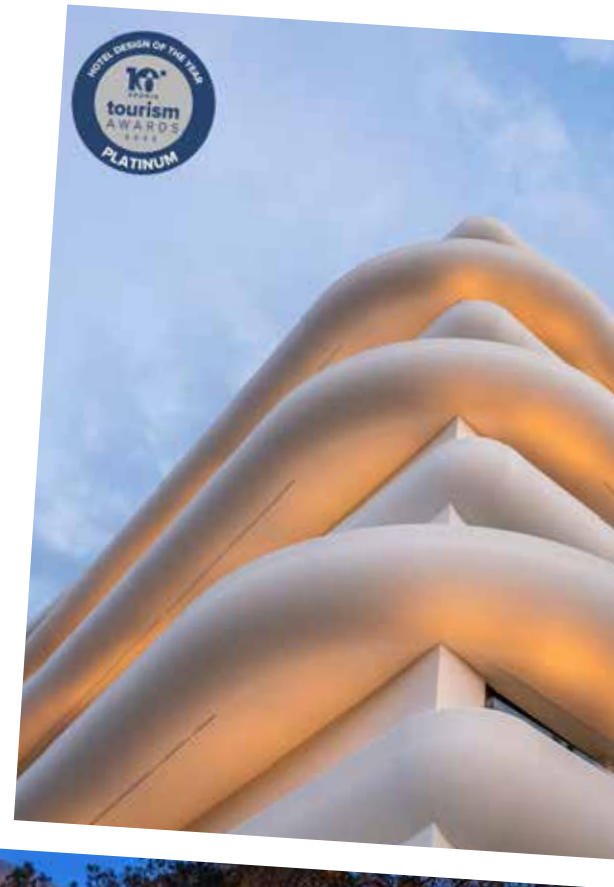
for its unique design, functionality, and safety, offering innovations designed to meet current real needs.

All the challenges of the project were handled exceptionally well by Aluminco, thanks to the high-end systems used. So visitors can enjoy an upgraded relaxation experience in the unique environment created with Aluminco's signature.

Awards

The gold prize, International Design Award (IDA) 2022, from the most important awards worldwide in the field of architecture, Interior Design, Product, Graphic and Fashion Design, was awarded to the architectural firm Elastic Architects and the Isla Brown Corinthia hotel of the Brown Hotels group, in the Architecture/Hotels & Resorts Design category.

At the 10th Annual Tourism Awards 2023 by BOUSSIAS, Isla Brown Corinthia was awarded Platinum for the Hotel Design of the Year!





GREEK ARCHITECTURE AWARDS 2023

ALUMINCO is a perennial sponsor

The annual institution launched by DOMa in 2010, the Greek Architecture Awards 2023, which took place on Wednesday July 5, in the atrium of the Benaki Museum, was completed with great success for the 14th consecutive year. A total of 226 entries were submitted to this year's event, the most of any other year. Architects and other design professionals active in Greece as well as Greeks active abroad participated in the event. Architecture is a vital and inspiring field that combines art, technology and architectural thinking to create impressive buildings and environments. We recognize the important contribution of architects, designers and researchers in this field and should encourage them to continue to promote architecture in the best possible way.



As ALUMINCO, with time-honored consistency and stability, we recognize the importance of our participation in the development and promotion of the architectural community and through our sponsoring support, we wish to enable young

talented architects to showcase their ideas and innovative approaches and be rewarded for their work.

At the company's stand, ALUMINCO's new product line called WALL&DECO CLADDING was presented, an ideal proposal for particularly modern masonry cladding constructions, offering unique benefits in different environments, focusing mainly on the well being of users.

On the day of the event, the volume «Greek Architecture Awards 2023» was released, in which the works of the finalists are presented.

#GreekArchitectureAwards 2023

#Greek Architecture Awards 2023



MULTIVERSE IN ESO 2023

ALUMINCO: successfully concluded, in the packed Alexandra Triantis Hall of the Athens Music Hall.

On Wednesday 24/05/2023, for the 11th consecutive year, ALUMINCO participated as a distinguished sponsor in the ESO conference which took place at the Athens Concert Hall, where the eminent representatives of the arts of design from Greece and abroad were «present», sharing their knowledge and experience, around the thematic 'Multiverse' which suggests the coexistence of many and different forms of natural and artificial life.

This year, the celebration of architecture and design was more impressive and crowded than ever, with the participation of distinguished architects from London, Copenhagen, Tokyo, Jerusalem and of course Athens and Thessaloniki, who shared on the stage of this year's ESO their vision, their innovative design practices, their concerns and, of course, their plans for the revision and redesign of modern metropolises as well as the countryside.



The highlight of the conference, for another year, was the fifth, in a row, presentation of the Archisearch Lifetime Achievement Awards, which took place in an emotional atmosphere, honoring, for their overall contribution, three great architects and teachers, Dimitris Antonakakis, Dimitris Filippidis and Kyriakos Kyriakidis, as well as the important painter, artist and academic Rena Papaspyrou .

ALUMINCO, a perennial supporter of ESO, had the opportunity to communicate at the stand - in simple lines and without tensions - the new WALL&DECO product line, as well as the SL55 system with a minimal design from the SKYLINE series.

ESO 2023 was produced by Design Ambassador with content curated by the Archisearch. The event is presented by Danai Makri, Head of Content at Design Ambassador, and Nicolas Barelieu, architect, founder of the clothing brand SCALA and permanent partner of Design Ambassador.





TECHNICAL CATALOGUES AND FORMS

Strong knowledge base for the benefit of partners.

Through a wider plan of activities and services, ALUMINCO promotes each collaboration in a unique way with the ultimate goal of mutual benefit.

We have designed and are constantly renewing personalized marketing techniques and tools, listening carefully to the requirements and wishes of our partners, so that serving them is a special experience. That is why we have built a strong knowledge base, which is designed to facilitate and upgrade their work, expand their know-how and therefore strengthen our cooperation.

On the ALUMINCO website you can find the new ALUMINIUM BUILDING SYSTEMS publication.

<https://aluminco.com/el/downloads/etairika/>