

SELECTIONS



ALUMINCO[®]
ALUMINIUM BUILDING SYSTEMS



Creativity is like a flame that inspires people in every place and environment.

It occurs naturally and effortlessly, just like the act of breathing, just like the sunrise, every day. Established more than 35 years ago, our fundamental mission at Aluminco is to inspire and motivate creativity on a high professional level. At the beginning of each day we set goals and strive for the completion with pride until the next challenge.

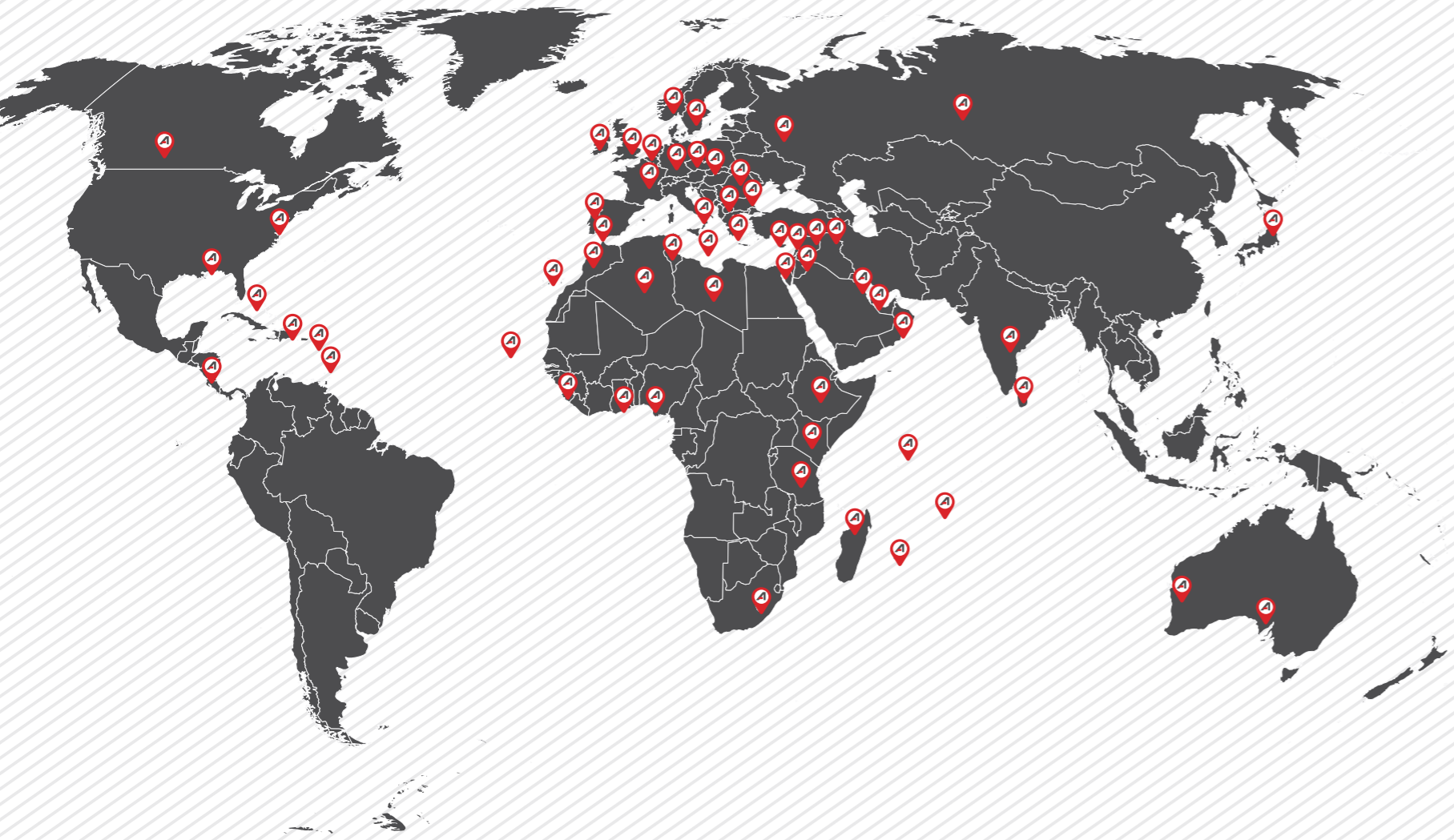
“Selections” is not a random option and we guarantee the best selections in materials, in design, in any single detail of every project you are going to see.

The most important single thing beyond discipline and creativity, is daring to dare.

Maya Angelou

ALUMINCO[®]
ALUMINIUM BUILDING SYSTEMS

Worldwide Selections



Shaping Who We Are

Since 1982 ALUMINCO, with a worldwide presence, focuses on developing, producing and marketing branded aluminium systems for every architectural use. A vast world of top certified aluminium products adds value and architectural excellence to every project.

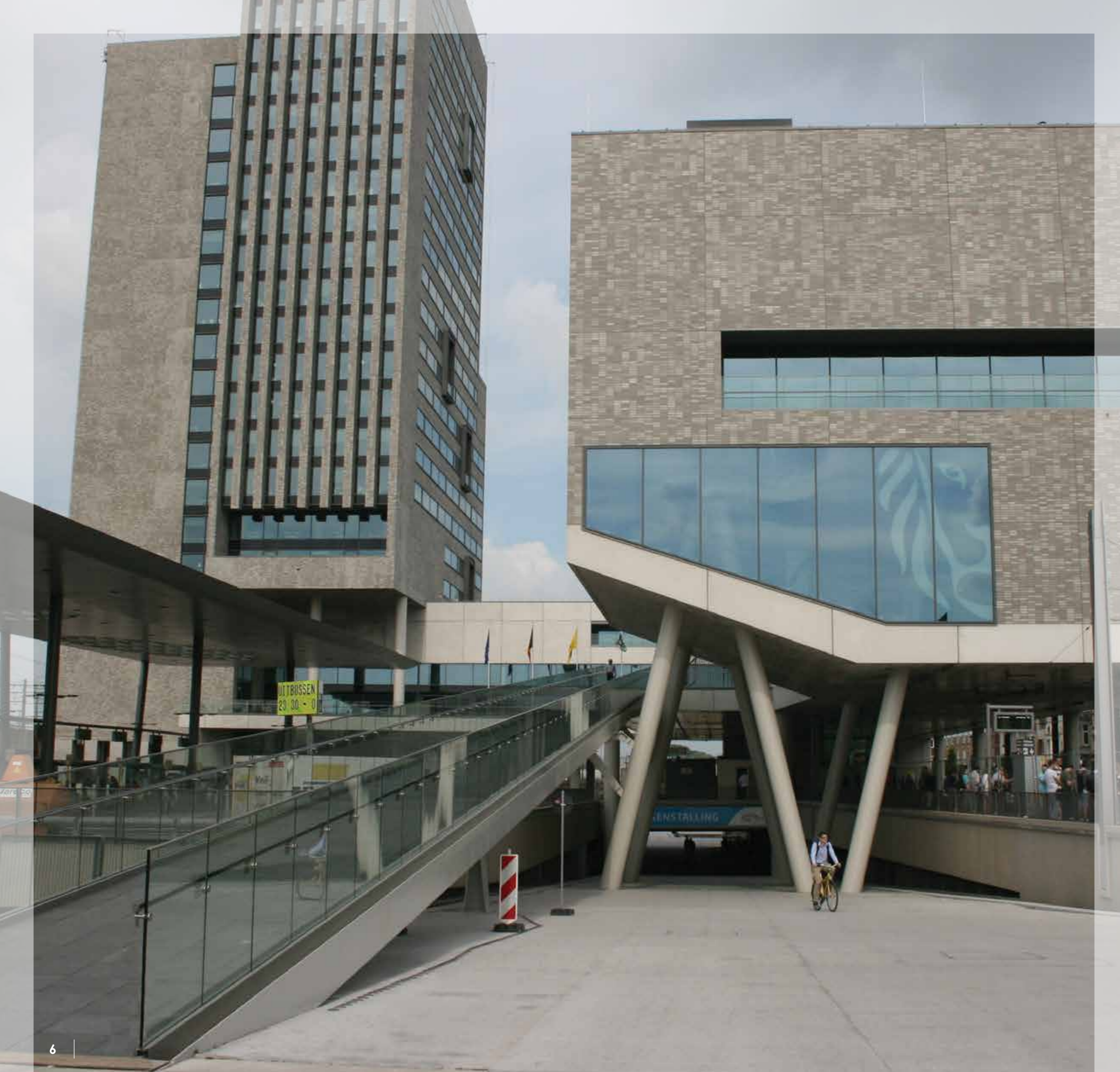
Whatever the size, complexity or location of a construction project, we are able to supply both advanced technical advice as well as market leading aluminium solutions that are innovative, energy efficient and environmentally sustainable. This competence pops up through our vast experience over three decades, but most of all due to our ability to build strong and close relationships with our collaborators, leading ALUMINCO towards innovation and excellence.

"Selections" is our first attempt to showcase projects which have implemented ALUMINCO products, a variety of highlighted projects that scared our tissue reminding us who we are, rewarding our efforts competing not only with others but mostly with ourselves.

Each project is unique and stands out for its incomparable style and architecture. Award-winning, innovative, breathtaking, inspirational, this is our accomplishment that overwhelms us with pride, defines the present and shapes the future.

Architects, Designers, Engineers and Construction perfectionists, should browse through "Selections", as ALUMINCO's landmark reference, keep it as an Inspiration, keep it as a Benchmark of what a Greek company can accomplish, keep it for You, keep it until the next one.





The Flemish Administrative Center

Location: Ghent - Belgium
Project type: Governmental Administrative Building
Partner: Aluminco Belgium



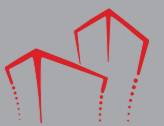
Residential project



Location: Zalka - Lebanon
Project type: Block of flats
Partner: Alexco Aluminium Experts



Mega Mall



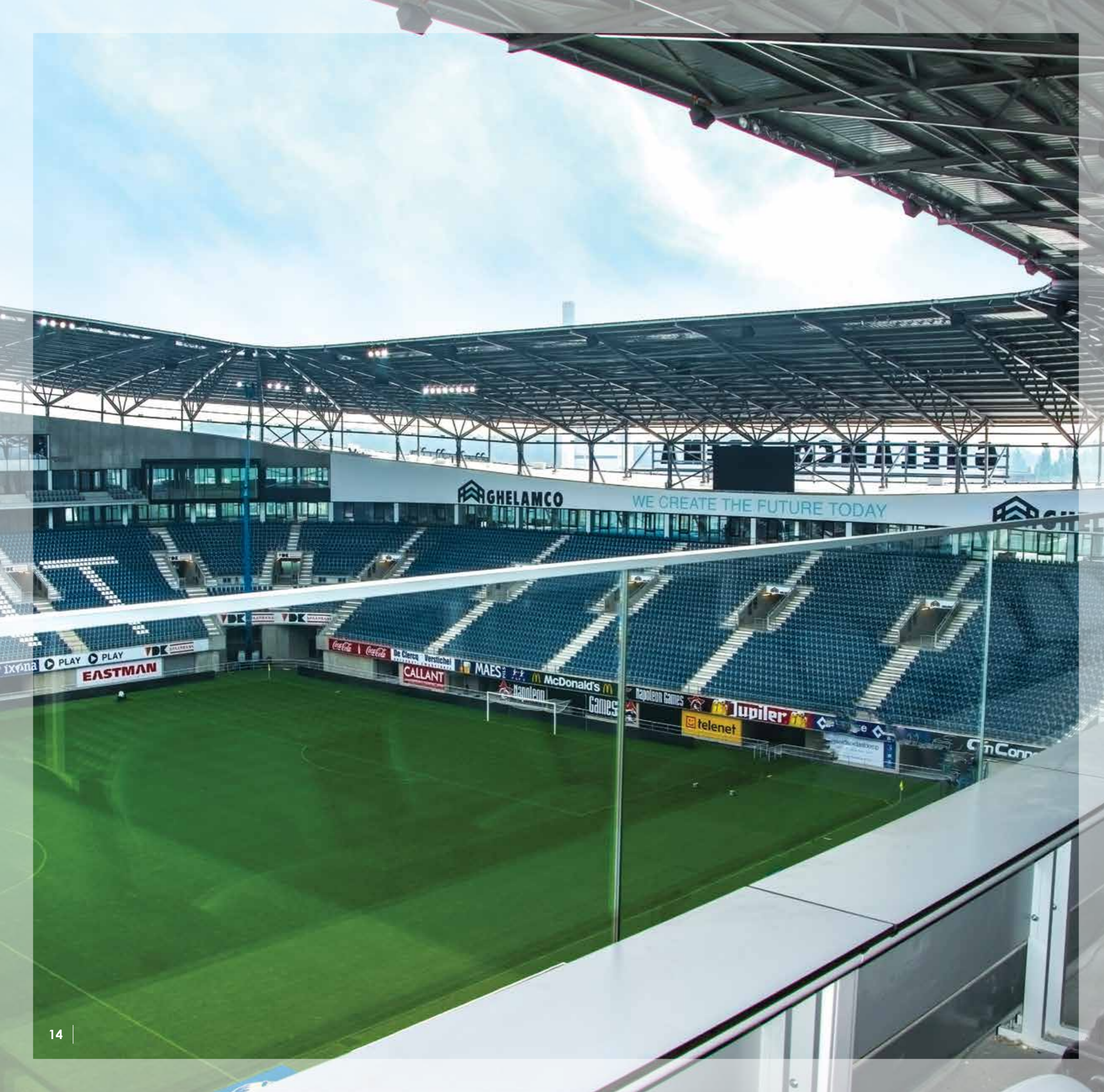
Location: Bucharest - Romania
Project type: Commercial Center



Project Light Falls



Location: Ghent - Belgium
Project type: Residential
Partner: Aluminco Belgium,
Arch Govaert & Vanhoutte Architects



Ghelamco Arena

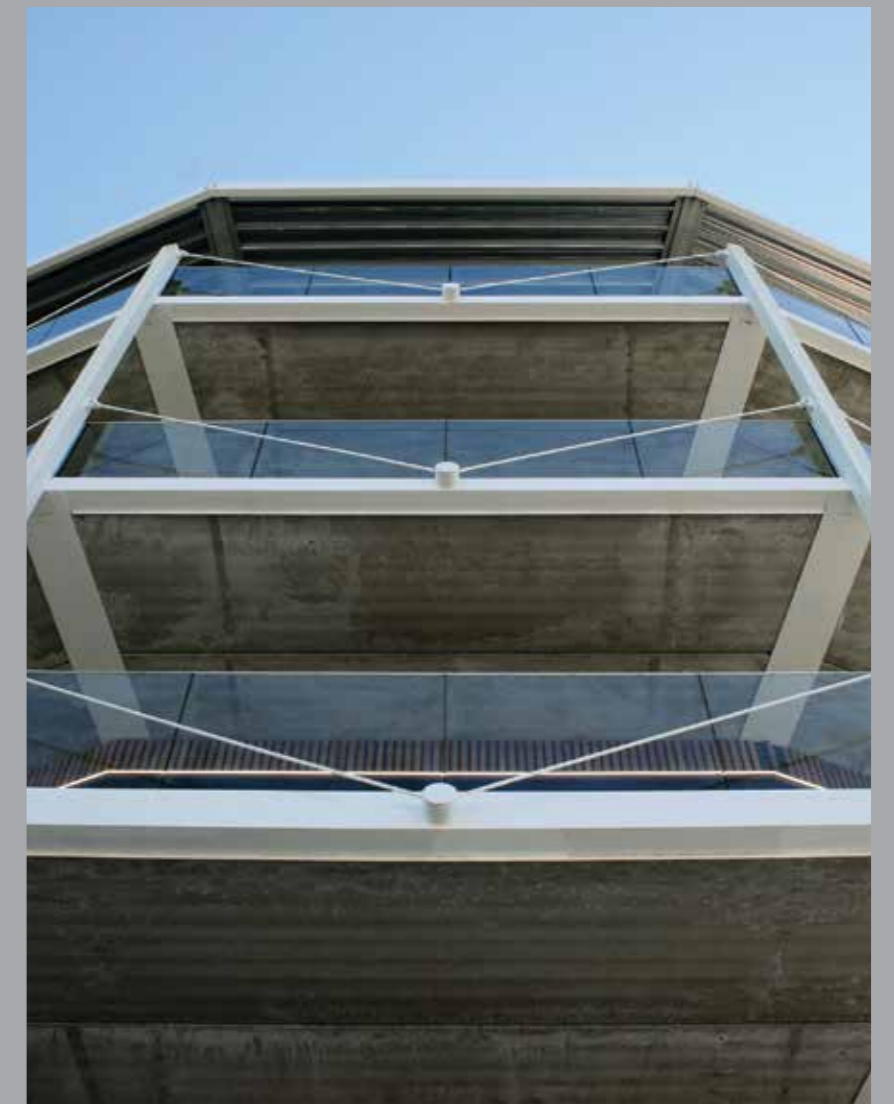
Location: Ghent - Belgium
 Project type: Multi use Stadium
 Partner: Aluminco Belgium
 Award: Grand Prix Award, Cosmos Cinema Berlin



Residential Compound



Location: Sounio - Greece
Project type: Group of maisonettes
Partner: Green Windows



Waregem Hippodrome



Location: Belgium
Project type: Governmental Administrative Building
Partner: Aluminco Belgium,
Willy Naessens



Primary School



Location: Meteora - Greece
Project type: Public Building
Partner: Kostarellos Nikolaos



Residential project

Location: Kalamata - Greece
Project type: Private Villa
Partner: MGM Architects,
P. Tenentes





Oasis Cafe



Location: Ioannina - Greece
Project type: Coffee Bar - Restaurant
Partner: Concept of Architect,
M. Karpouzis + Associates



Andriake Beach Club ★★★★★



Location: Demre - Turkey
Project type: Hotel Resort



Michakou Residence



Location: Heraklion - Greece
Project type: Private Villa
Partner: Pikrakis Aluminium Industry,
3SK Stylianidis Architects



Red Square Offices



Location: Moscow - Russia
Project type: Public Offices



Residential project



Location: Croydon East London - U.K.
Project type: Block of apartments
Partner: MD Kalglass Ltd



Grecootel Mandola Rosa Exclusive Resort

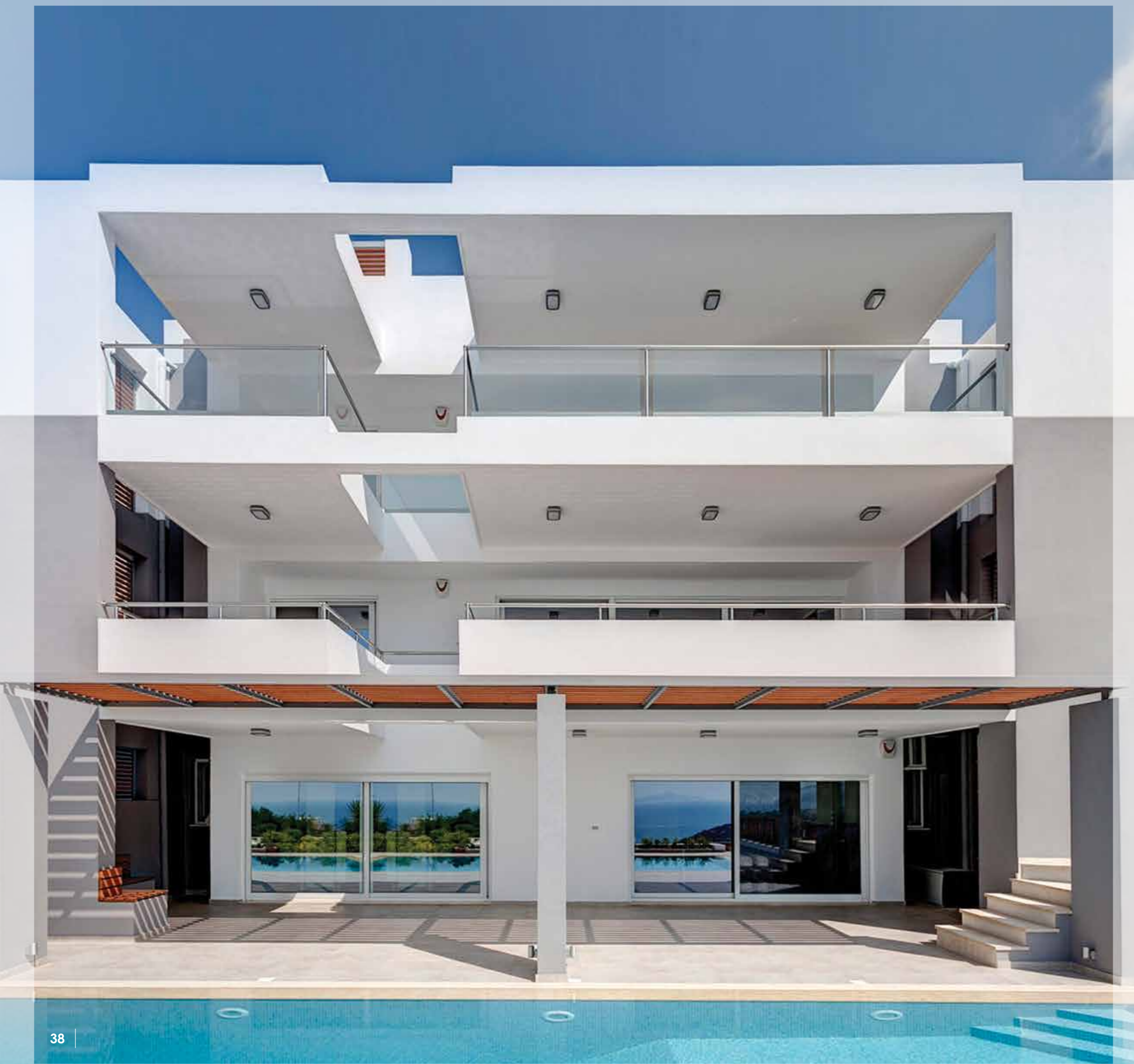
Location: Loutra - Kyllini - Greece
Project type: Hotel



Cubic Architecture Villa



Location: Krk island - Croatia
Project type: Private Residence
Partner: Linea Plus



Residential project



Location: Saint Nicholas - Greece
Project type: Block of flats
Partner: A+P Papadopoulos, M+O Agkoutoglou
Awards: The Plan Awards, Italy, one of 16 best
residential worldwide.
"Zodchestvo" Moscow Festival
one of 24 Greek Participations

ΕΛΛΗΝΙΚΗ ΕΠΙΤΡΟΠΗ ΑΤΟΜΙΚΗΣ ΕΝΕΡΓΕΙΑΣ
GREEK ATOMIC ENERGY COMMISSION



Greek Atomic Energy Commission



Location: Athens - Greece
Project type: Administrative Offices & Labs
Partner: Tsiamtsiakiri E & A



Evgiros Villas



Location: Lefkada island - Greece
Project type: Hotel Maisonettes



Residential project



Location: Heraklion - Greece
Project type: 4 Blocks of flats
Partner: Zinon Dionysiadis



VPK Packaging Aalst Headquarters



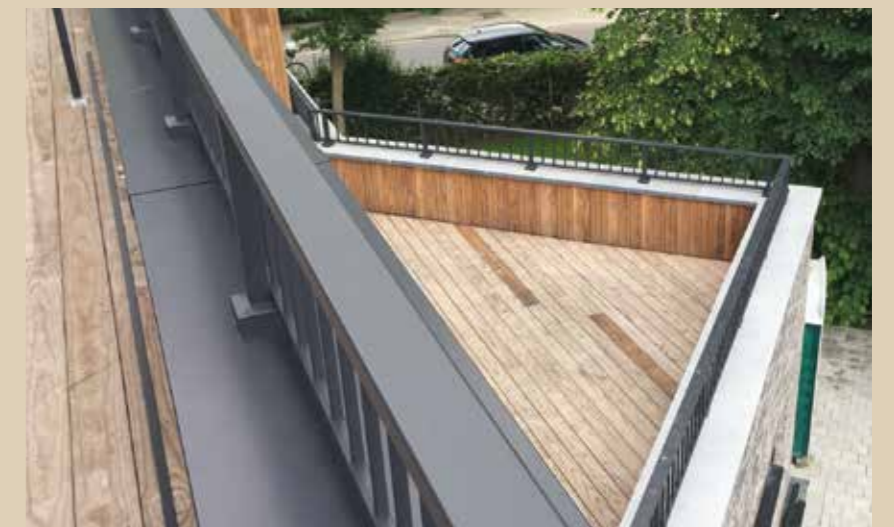
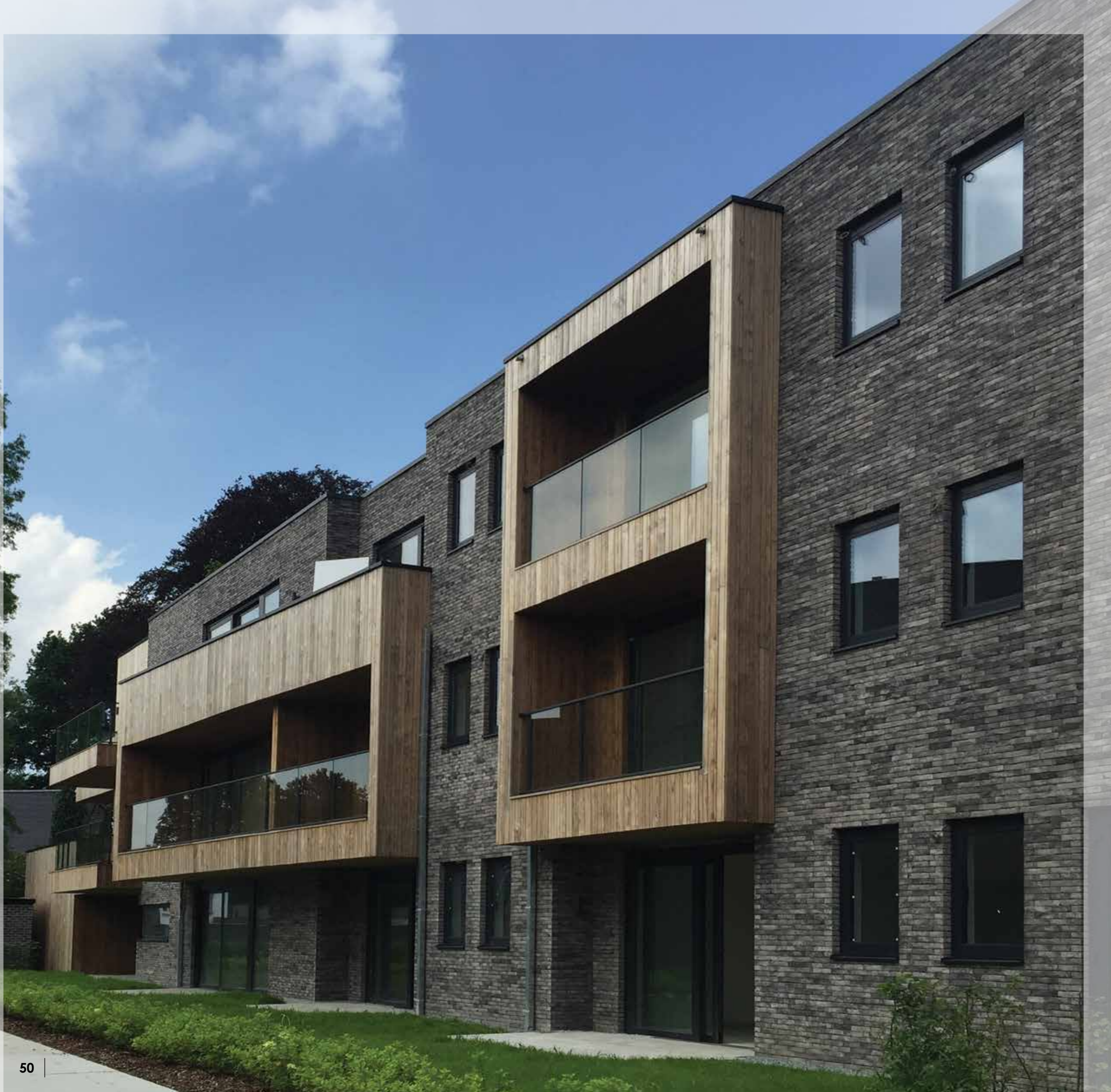
Location: Belgium
Project type: Offices
Partner: Aluminco Belgium,
Coppens & Coen Architects



Residential project



Location: Elliniko - Greece
Project type: Group of flats
Partner: Green Windows



Project Alegria



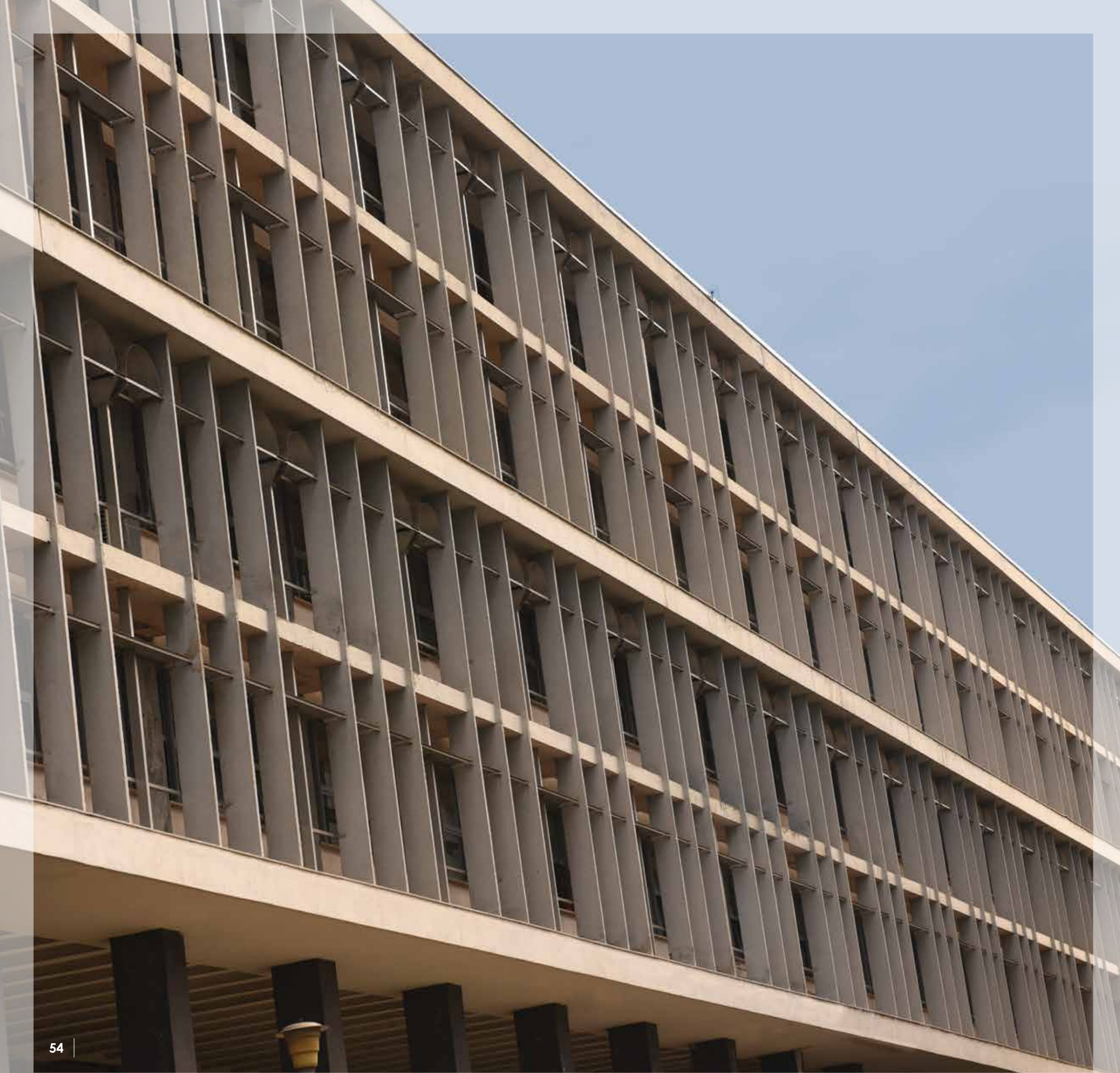
Location: Sint-Niklaas - Belgium
Project type: Group of residences
Partner: Aluminco Belgium,
Jo Van Laere Architect



Residential project



Location: Rotselaar - Belgium
Project type: Private Residence
Partner: Aluminco Belgium



Court of Justice



Location: Thessaloniki - Greece
Project type: Public Building



Capriani



Location: Belgium
Project type: Restaurant - Cafe
Partner: Aluminco Belgium,
AIDarchitecten Architect



Makro Mall



Location: Alleur - Liege - Belgium
Project type: Retail Building
Partner: Aluminco Belgium



Ocean Club



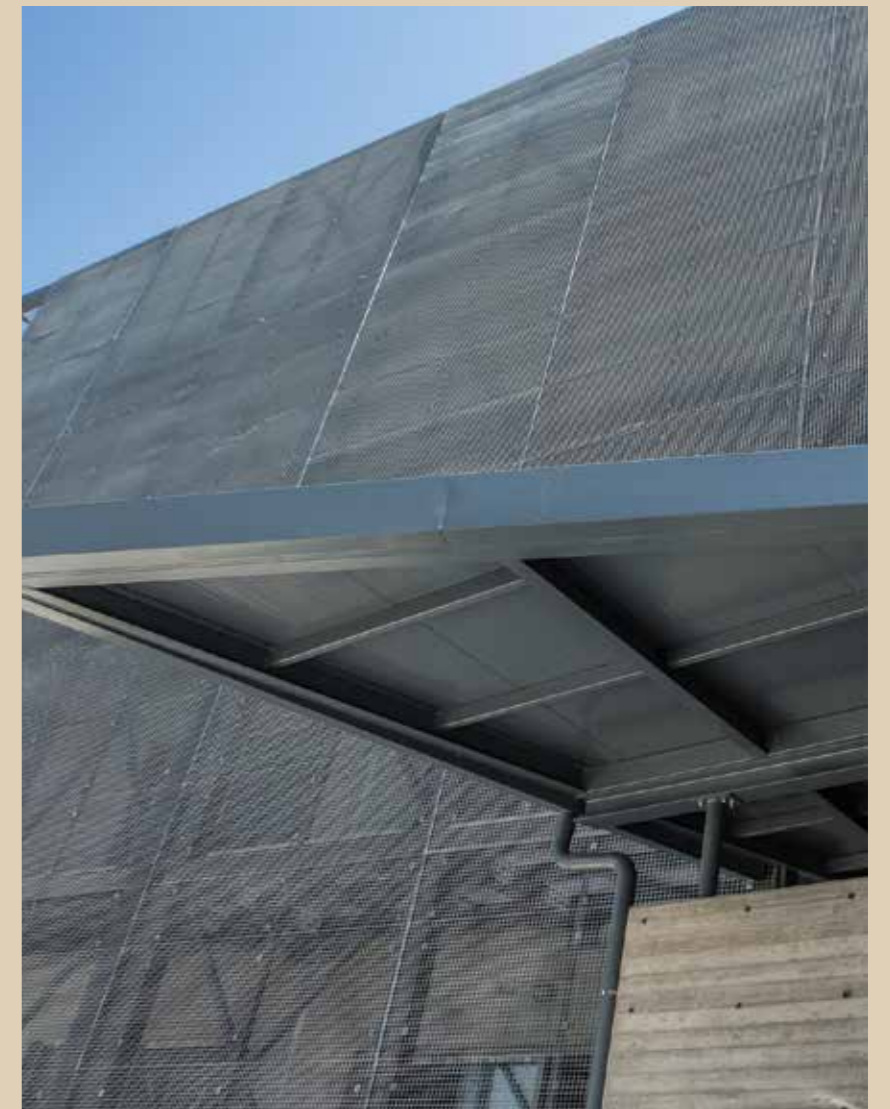
Location: Bahamas - N. America
Project type: Hotel



Lazarides House of Wine



Location: Kapandriti - Greece
Project type: Private Winery



University



Location: Volos - Greece
Project type: Public Building



Primary School



Location: Nafpaktos - Greece
Project type: Public Building



Youssef Ghaith Villa



Location: Lebanon
Project type: Private Residence
Partner: ALEXCO Aluminium Experts,
Makram Kadi, Architect



Grand Azuri Hotel

Location: Saint Mauritius
Project type: Hotel Apartments



Deeper Blue Headquarters



Location: Surrey - U.K.
Project type: Offices
Partner: Kalglass Ltd



Hotel



Location: Porat - Croatia
Project type: Hotel
Partner: Linea Plus



Movenpick Hotel

Location: Crete - Greece
Project type: Hotel of 285 rooms
Partner: Pikrakis Aluminium Industry



Creta Maris



Location: Crete - Greece
Project type: Hotel
Partner: Zinon Dionysiadis



Drapstraat project



Location: Ghent - Belgium
Project type: Block of 5 apartments
Partner: Aluminco Belgium,
BURO 56 Architects



Residential project

Location: Saint Marten
Project type: Private Villa
Partner: Business Alu





Psychiatric Clinic

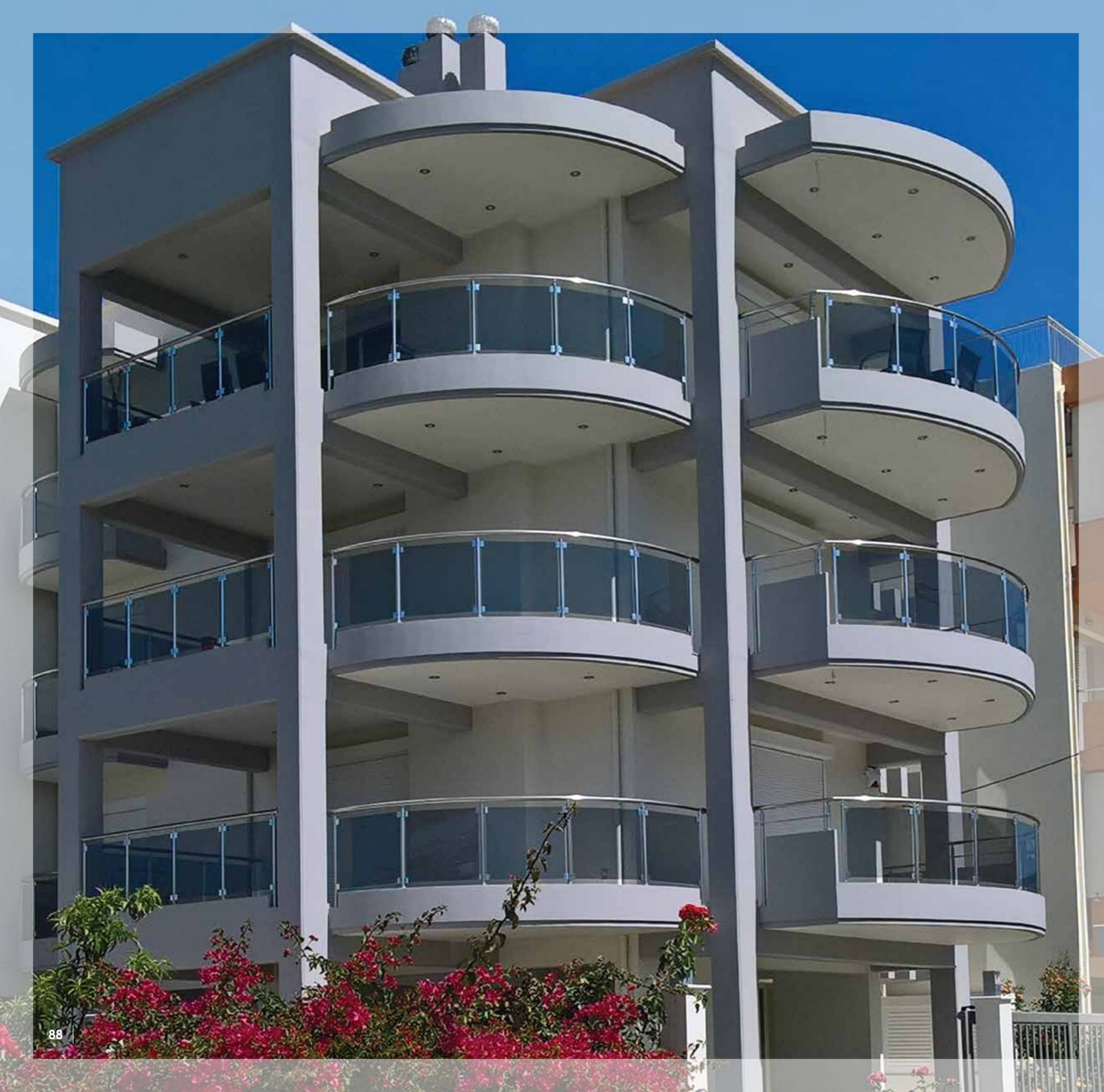
Location: Volos - Greece
Project type: Hospital
Partner: Tzitzikidis K. - Thermoglass



Residential project



Location: Melissa - Greece
Project type: Maisonette
Partner: Green Windows



Residential project



Location: Kalamata - Greece
Project type: Group of flats
Partner: Metallotechniki P & N



Residential project



Location: Bucharest - Romania
Project type: Block of flats



Mohamad Chehab Villa



Location: Lebanon
Project type: Private Villa
Partner: ALEXCO Aluminium Experts



Atlantica Caldera Bay



Location: Crete - Greece
Project type: Hotel
Partner: Pikrakis Aluminium Industry



Bella Rocca



Location: Belgium
Project type: Block of residences
Partner: Aluminco Belgium



Residential project



Location: Grembergen - Belgium
Project type: Group of 63 apartments
Partner: Aluminco Belgium



Wellington project



Location: Oostende - Belgium
Project type: Private Residences
Partner: Aluminco Belgium



Police Station



Location: Volos - Greece
Project type: Administrative Offices



Saiid Trad project

Location: Lebanon
Project type: Private Residence
Partner: ALEXCO Aluminium Experts



Residential project



Location: Mons - Belgium
Project type: Group of residences
Partner: Aluminco Belgium,
A & G Atelier d'architecture



Residential project



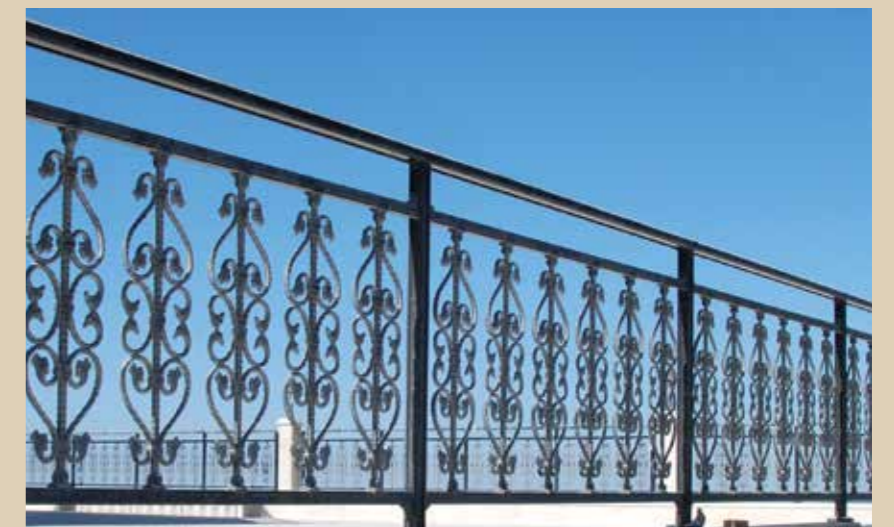
Location: Merelbeke - Belgium
Project type: Group of residences
Partner: Aluminco Belgium



Claessen Retail Shop



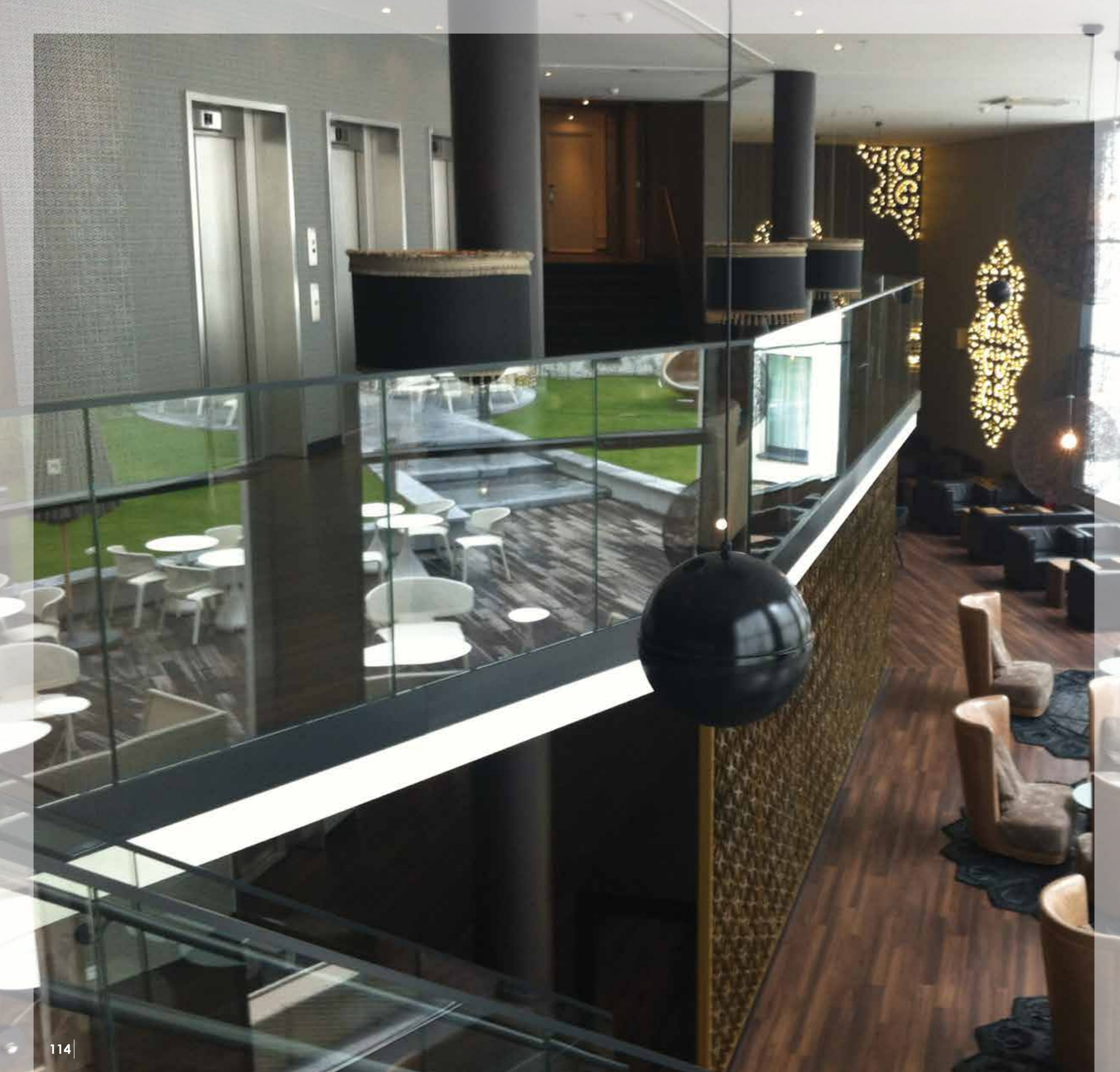
Location: Belgium
Project type: Retail Building
Partner: Aluminco Belgium



Samir Gaith Villa project



Location: Lebanon
Project type: Private Residence
Partner: ALEXCO Aluminium Experts



Motel One Hotel

Location: Brussels - Belgium
Project type: Cafe
Partner: Aluminco Belgium



Public Building



Location: Poland
Project type: Offices
Partner: Alu Project



Melopee Residence



Location: Antwerp - Belgium
Project type: 32 apartments
Partner: Aluminco Belgium

WORK IN
PROGRESS



Beirut Gardens

WORK IN
PROGRESS



Factory Lofts

WORK IN
PROGRESS



Fattouhi Villa

WORK IN
PROGRESS



Msaytbeh

WORK IN
PROGRESS



Mondrian

SELECTIONS



Public Buildings

The Flemish Administrative Center, Ghent – Belgium	6-7
Mega Mall, Bucharest – Romania	10-11
Ghelamco Arena, Ghent – Belgium	14-15
Waregem Hippodrome – Belgium	18-19
Primary School, Meteora – Greece	20-21
Oasis Cafe, Ioannina – Greece	24-25
Greek Atomic Energy Commission, Athens – Greece	40-41
Court of Justice, Thessaloniki – Greece	54-55
Capriani – Belgium	56-57
Makro Mall, Liege – Belgium	58-59
University, Volos – Greece	64-65
Primary School, Nafpaktos – Greece	66-67
Psychiatric Clinic, Volos – Greece	84-85
Police Station, Volos – Greece	102-103
Claessen Retail Shop – Belgium	110-111
Motel One Hotel, Brussels – Belgium	114-115



Offices

Red Square Offices, Moscow – Russia	30-31
VPK Packaging Aalst Headquarters – Belgium	46-47
Deeper Blue Headquarters, Surrey – U.K.	72-73
Public Building – Poland	116-117



Hotels

Andriake Beach Club, Demre – Turkey	26-27
Grecotel Mandola Rosa Resort, Kyllini – Greece	34-35
Evgiros Villas, Lefkada island – Greece	42-43
Ocean Club, Bahamas – N. America	60-61
Lazarides House of Wine, Kapandriti – Greece	62-63
Grand Azuri Hotel – Saint Mauritius	70-71
Hotel, Porat – Croatia	74-75
Movenpick Hotel, Crete – Greece	76-77
Creta Maris, Crete – Greece	78-79
Atlantica Caldera Bay, Crete – Greece	94-95



Residentials

Residential project, Zalka – Lebanon	8-9
Project Light Falls, Ghent – Belgium	12-13
Residential Compound, Sounio – Greece	16-17
Residential project, Kalamata – Greece	22-23
Michakou Residence, Heraklion – Greece	28-29
Residential project, Croydon – U.K.	32-33
Cubic Architecture Villa, Krk island – Croatia	36-37
Residential project, Saint Nicholas – Greece	38-39
Residential project, Heraklion – Greece	44-45
Residential project, Elliniko – Greece	48-49
Project Alegria, Sint-Niklaas – Belgium	50-51
Residential project, Rotselaar – Belgium	52-53
Youssef Ghaith Villa – Lebanon	68-69
Drapstraat project, Ghent – Belgium	80-81
Residential project – Saint Marten	82-83
Residential project, Melissa – Greece	86-87
Residential project, Kalamata – Greece	88-89
Residential project, Bucharest – Romania	90-91
Mohamad Chehab Villa – Lebanon	92-93
Bella Rocca – Belgium	96-97
Residential project, Grembergen – Belgium	98-99
Wellington project, Oostende – Belgium	100-101
Saiid Trad project – Lebanon	104-105
Residential project, Mons – Belgium	106-107
Residential project, Merelbeke – Belgium	108-109
Samir Gaith Villa project – Lebanon	112-113
Melopee Residence, Antwerp – Belgium	118-119

Creativity in progress



Aluminco S.A.
32011 Inofita Viotia - Greece
T.: +30 22620 47000 - F.: +30 22620 47090
info@aluminco.com, exports@aluminco.com
www.aluminco.com