

CURTAIN WALL SYSTEM

STUDIO LAB



**EW50 SP**

**Curtain Wall System**  
Outstanding sound performance.



## System Identity

The EW50 SP is a thermally insulated curtain wall system for robust constructions of large glass surfaces, designed with reinforced profiles and new system components that meets the highest requirements in sound performance. This curtain wall system is standard type (mullion / transom) with horizontal and vertical cover. Mullions and transoms are made with the same profiles of 50 mm sightlines. EPDM gaskets and a special thermal and acoustic isolator are used to optimize the insulation of the system. It also offers the possibility to integrate triple glazing. This option increases the size of the glazing, giving the benefit to meet demanding projects in terms of thermal and acoustic performance. In addition, the possibility of incorporating opening frames can be achieved with ALUMINCO's doors and windows series. The ALUMINCO EW50 SP is well equipped to deal with the requirements that enhance the living and working environment of a building.

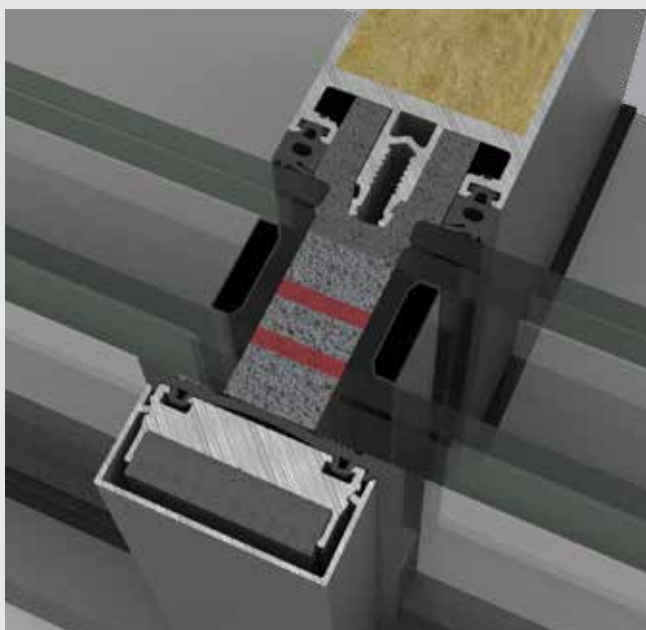
## Features & Benefits

- Outstanding sound insulation
- Optimum thermal insulation
- High degree of functionality
- Triple or double glazing solutions

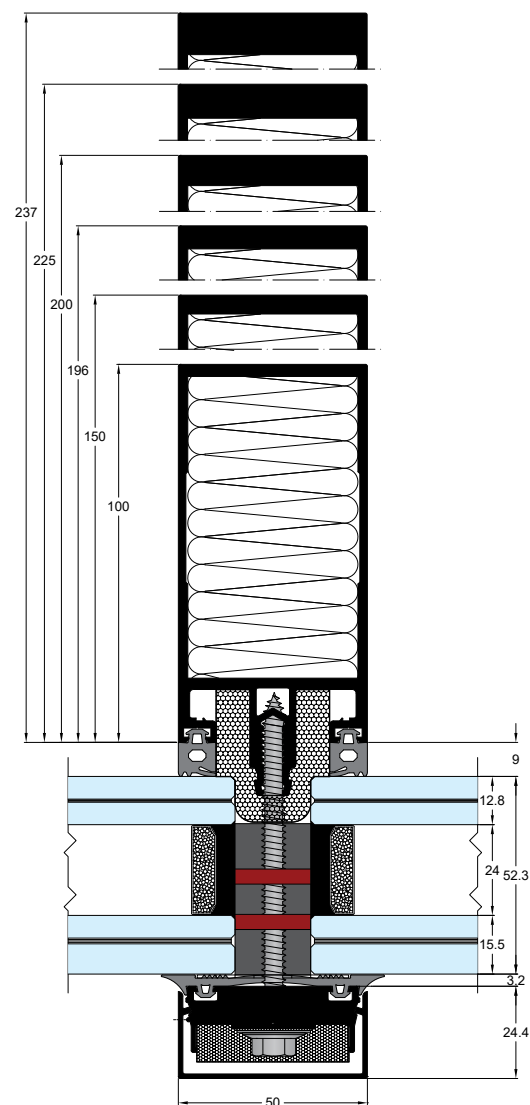
## Configurations

### Standard

Fixed, Corner inside/outside



## SOUND PERFORMANCE



### TECHNICAL CHARACTERISTICS

EXTERIOR VISIBLE WIDTH	50 mm
DEPTH MULLION	50-237 mm
DEPTH TRANSOM	150 mm
GLASS THICKNESS	12-64 mm
MULLIONS MAX INERTIA	$I_x=1881 \text{ cm}^4$ $I_y=83 \text{ cm}^4$
TRANSOMS MAX INERTIA	$I_x=322 \text{ cm}^4$ $I_y=44 \text{ cm}^4$

### CERTIFICATES/PERFORMANCES

AIR PERMEABILITY EN 12152 & 12207	Class A4
WATER TIGHTNESS EN 12208	Class RE1200
RESISTANCE TO WIND LOAD EN 12210	Design load: $\pm 2000 \text{ Pa}$ (203 Kgr/m <sup>2</sup> ) Increased load: $\pm 3000 \text{ Pa}$ (304 Kgr/m <sup>2</sup> )
SOUND REDUCTION $R_w$ (C;Ctr) ISO 10140-2	52 (-3;-7) dB
THERMAL INSULATION EN ISO 12412-2	1.64 W/m <sup>2</sup> K