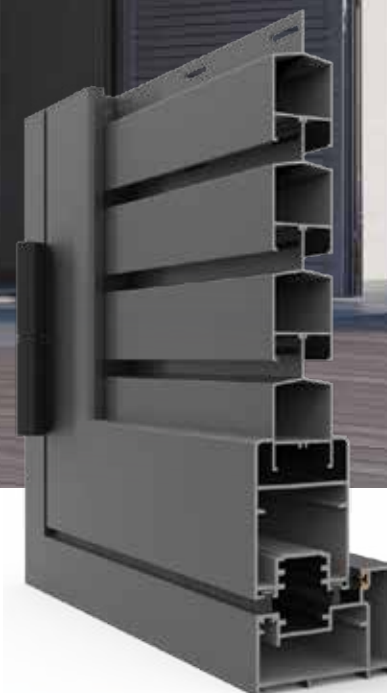


SH3200

Shutter System

Passive solar shading suitable for residential buildings.



System Identity

SH3200 is ALUMINCO’s proposal as far as high-quality and wide-range shutters are concerned. It offers shading and ventilation and is ideal for private houses as well as traditional or even listed buildings.

The system allows a variety of constructional options, in all possible typologies, in a classic or modern design, matching with opening aluminium systems, working as an independent structure as well.

Any fixed louver can adapt to it, including the 25mm movable louver system. The SH3200 is extremely friendly and practical to use, unique in its kind.

Features & Benefits

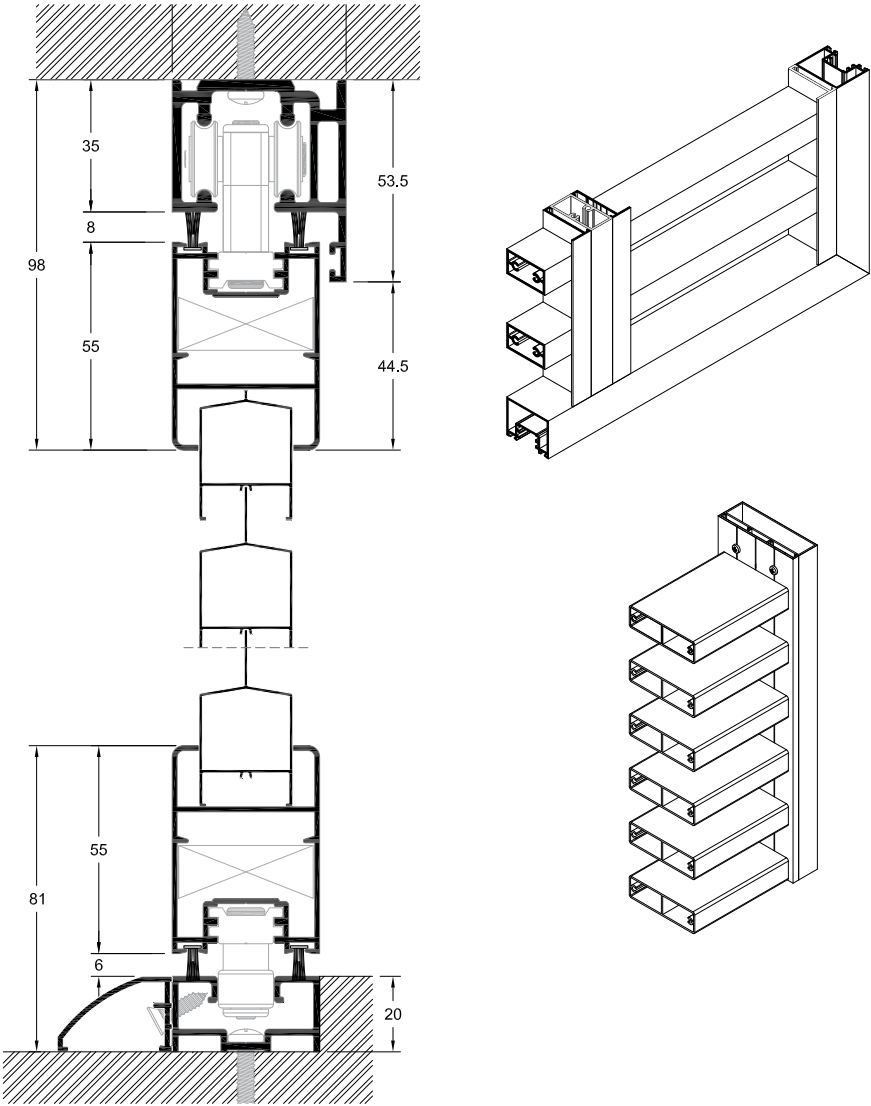
- Constructions of opening, sliding and folding shutters systems by using the same sash.
- Use of special rollers for smooth scrolling and alignment of the sash for both folding and sliding system.
- Large variety of opening shutters in all possible typologies (fixed, single-ply, two-ply, four-leaf).
- Accepts fixed louvers, oval and movable louver.
- Movable shading leaves placed on the outer or inner side of the railings and over the railing, ideal for applications on balconies.

Configurations

Opening, Sliding, Folding, Fixed



Bottom sash guide roller for smooth movement.



CONFIGURATIONS	OPENING	SLIDING	FOLDING	FIXED
SYSTEM PROFILE DIMENSIONS				
MIN. FRAME DEPTH mm	39	39	46	39
MIN. FACE HEIGHT mm	88	81	81	56.6
CONSTRUCTION DIMENSIONS				
SASH WIDTH mm	250-750	250-1300	300-750	230-1300
SASH HEIGHT mm	250-2200	250-2200	300-2200	250-2200
MAX. SASH DIMENSIONS mm (WxH)	650x2200	1100x2200	550x2200	1100x2200
MAX. SASH WEIGHT Kg	80	80	30	N/A